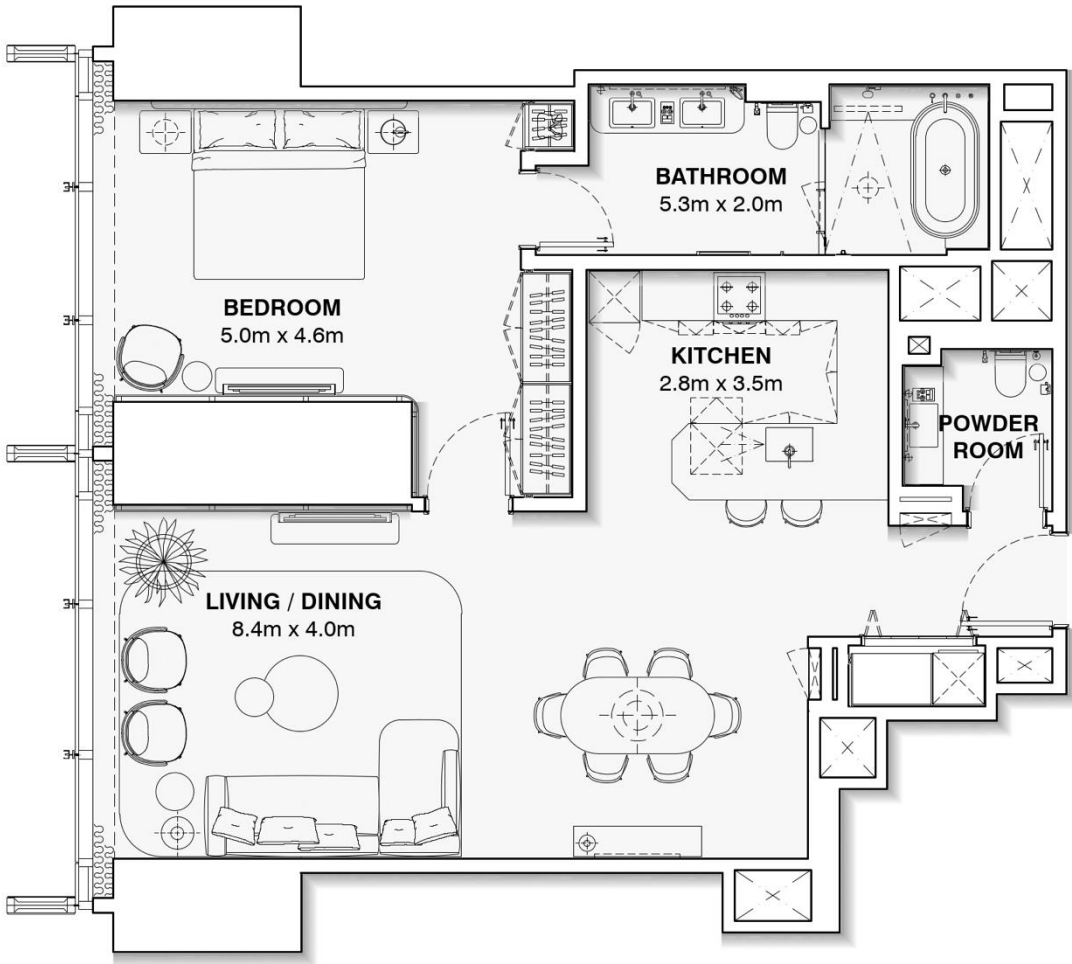


APARTMENT UNIT : 1401 – 5301

ONE BEDROOM

APARTMENT AREA : 98.7 m2

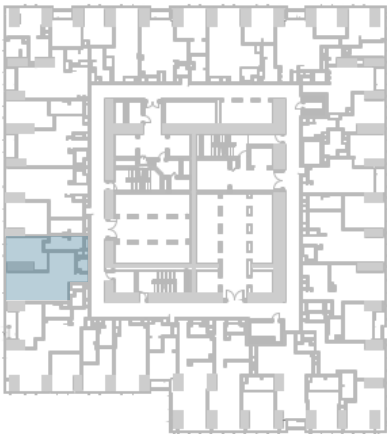
TOTAL AREA : 98.7 m2



DISCLAIMER:

The marketing floor plans provided by the developer are for illustrative purposes only. Actual dimensions, layout, and finishes may vary from those depicted in the plans. Furniture shown in the plans are for decorative purposes only and are not included in the purchase of the property.

The developer reserves the right to make modifications, revisions, and changes to the floor plans, specifications and features without prior notice.

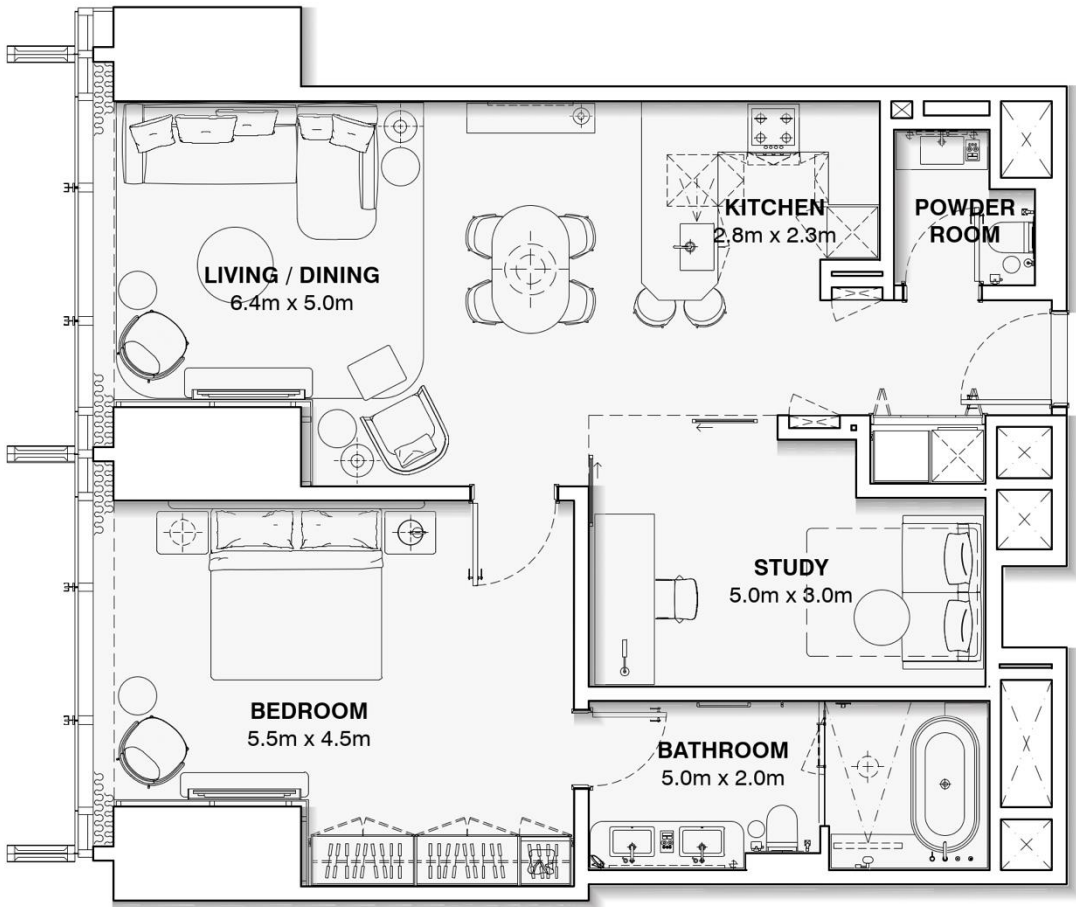


APARTMENT UNIT : 1402 – 5302

ONE BEDROOM + STUDY

APARTMENT AREA : 101.9 m2

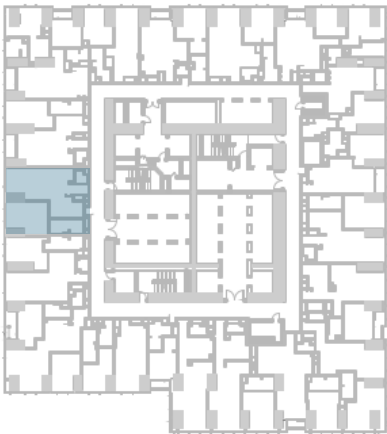
TOTAL AREA : 101.9 m2



DISCLAIMER:

The marketing floor plans provided by the developer are for illustrative purposes only. Actual dimensions, layout, and finishes may vary from those depicted in the plans. Furniture shown in the plans are for decorative purposes only and are not included in the purchase of the property.

The developer reserves the right to make modifications, revisions, and changes to the floor plans, specifications and features without prior notice.



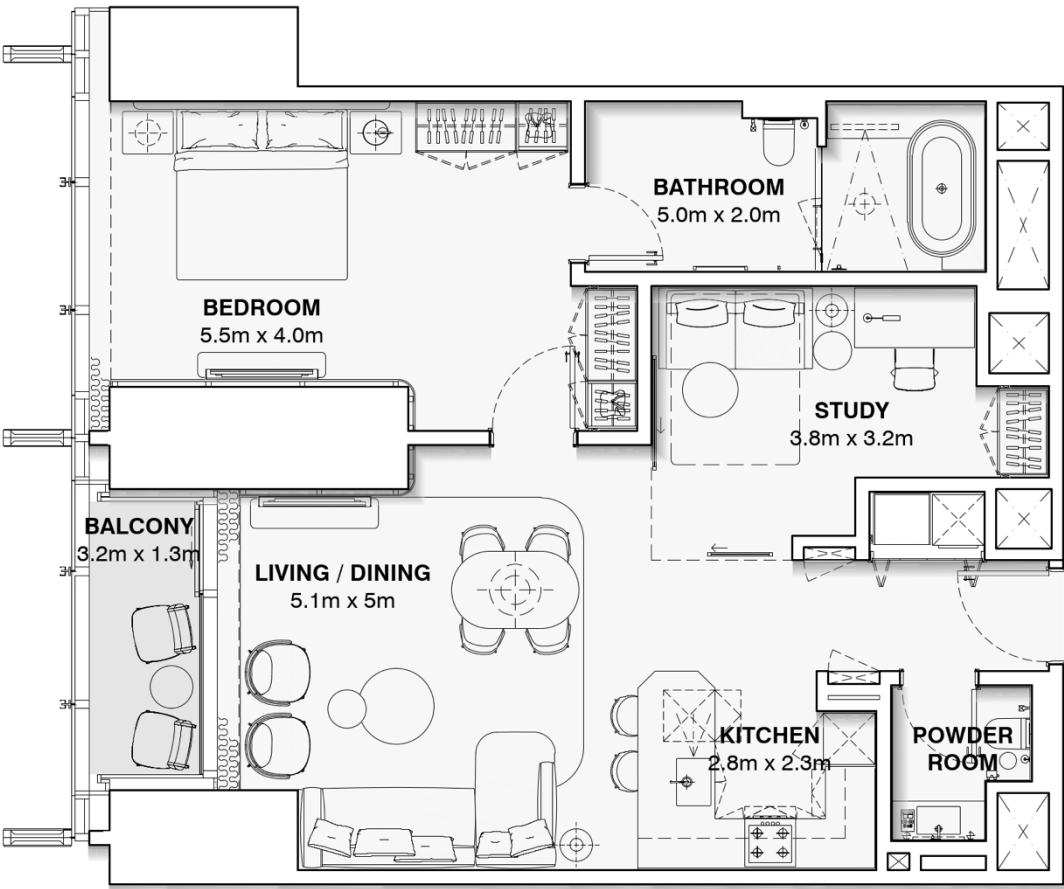
APARTMENT UNIT : 1403 – 5503

ONE BEDROOM + STUDY

APARTMENT AREA : 96.6 m2

BALCONY AREA : 5.0 m2

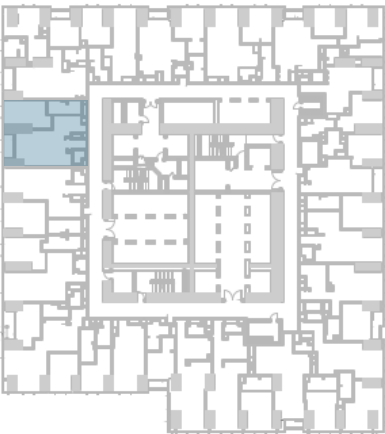
TOTAL AREA : 101.6 m2



DISCLAIMER:

The marketing floor plans provided by the developer are for illustrative purposes only. Actual dimensions, layout, and finishes may vary from those depicted in the plans. Furniture shown in the plans are for decorative purposes only and are not included in the purchase of the property.

The developer reserves the right to make modifications, revisions, and changes to the floor plans, specifications and features without prior notice.



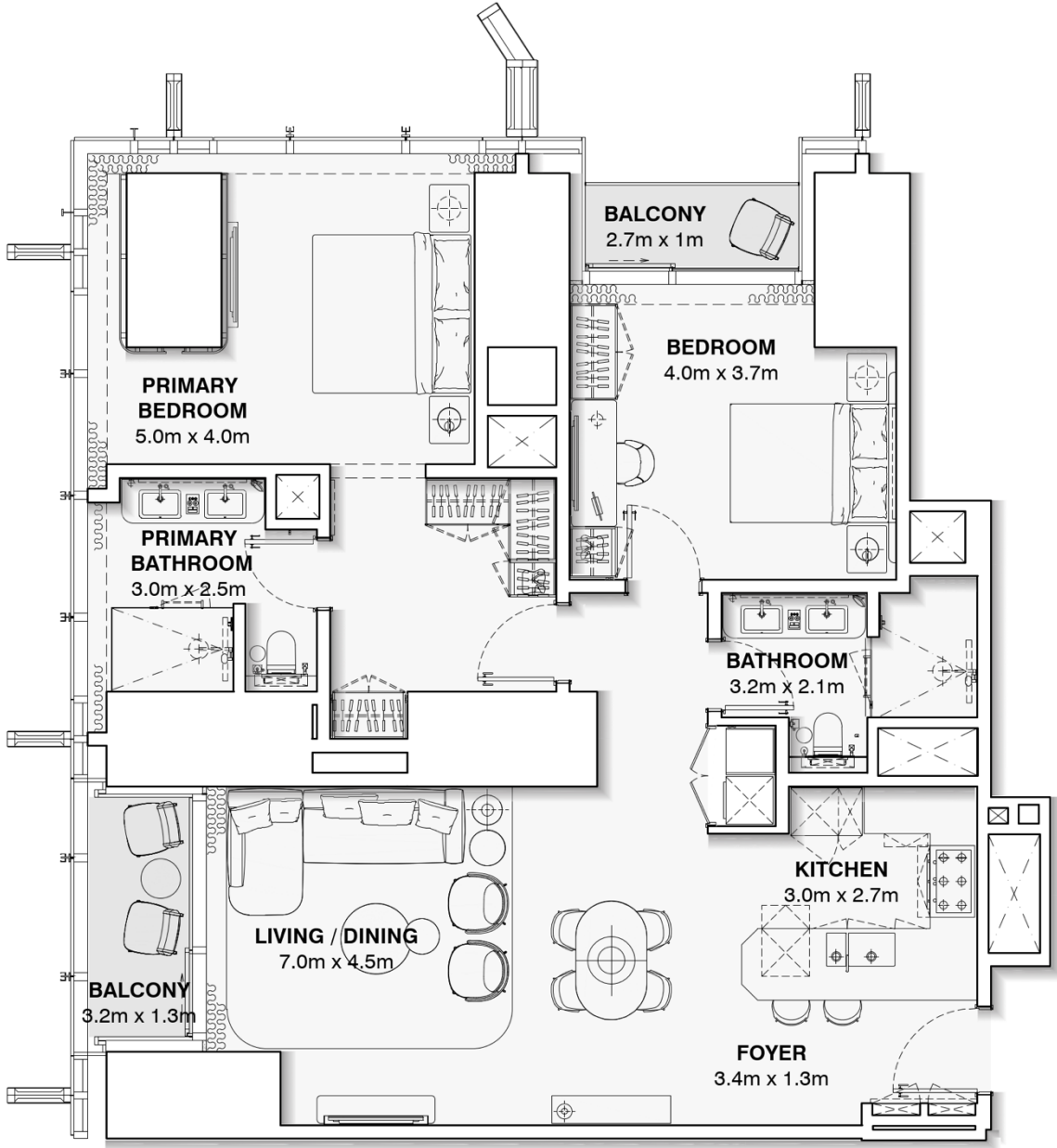
# APARTMENT UNIT : 1404 – 5304

## TWO BEDROOM

APARTMENT AREA : 124.8 m2

BALCONY AREA : 7.7 m2

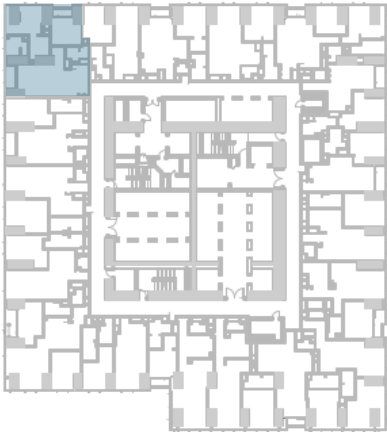
TOTAL AREA : 132.5 m2



**DISCLAIMER:**

The marketing floor plans provided by the developer are for illustrative purposes only. Actual dimensions, layout, and finishes may vary from those depicted in the plans. Furniture shown in the plans are for decorative purposes only and are not included in the purchase of the property.

The developer reserves the right to make modifications, revisions, and changes to the floor plans, specifications and features without prior notice.



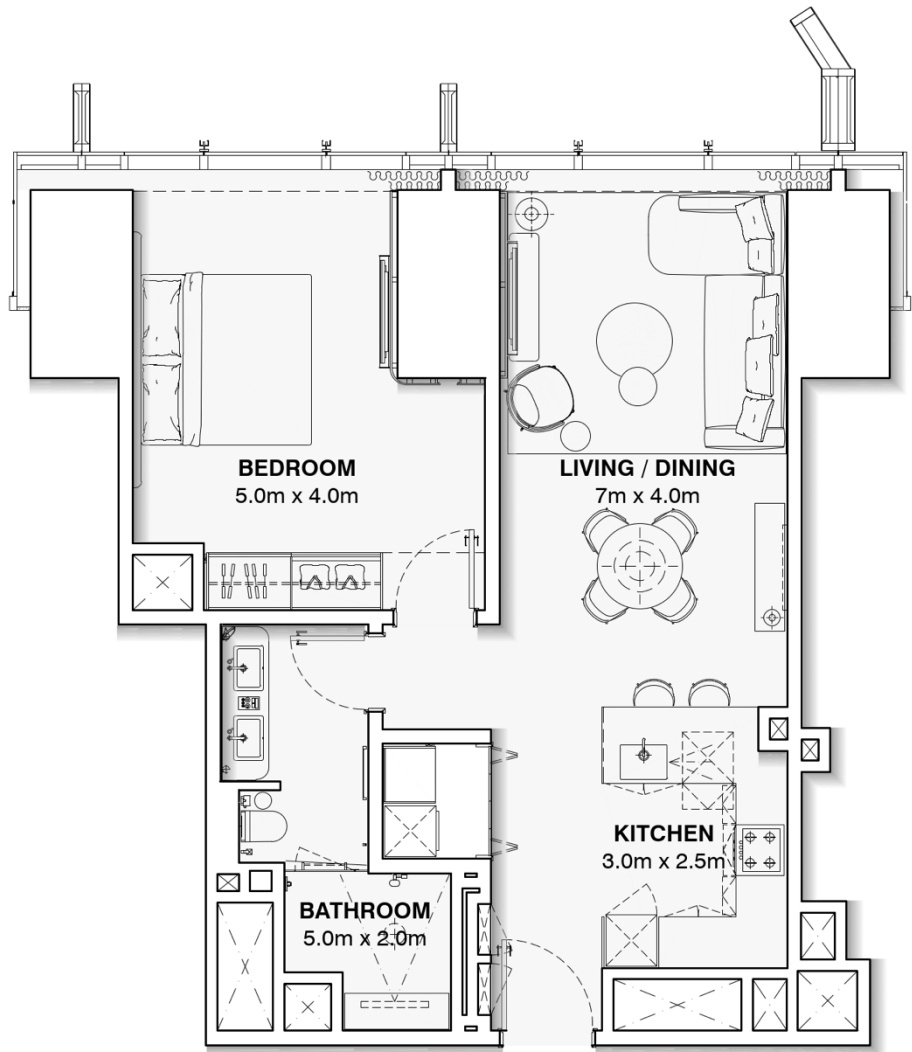


APARTMENT UNIT : 1405 – 5305

ONE BEDROOM

APARTMENT AREA : 74.4 m2

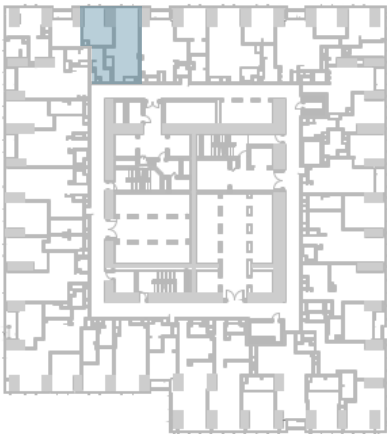
TOTAL AREA : 74.4 m2



DISCLAIMER:

The marketing floor plans provided by the developer are for illustrative purposes only. Actual dimensions, layout, and finishes may vary from those depicted in the plans. Furniture shown in the plans are for decorative purposes only and are not included in the purchase of the property.

The developer reserves the right to make modifications, revisions, and changes to the floor plans, specifications and features without prior notice.



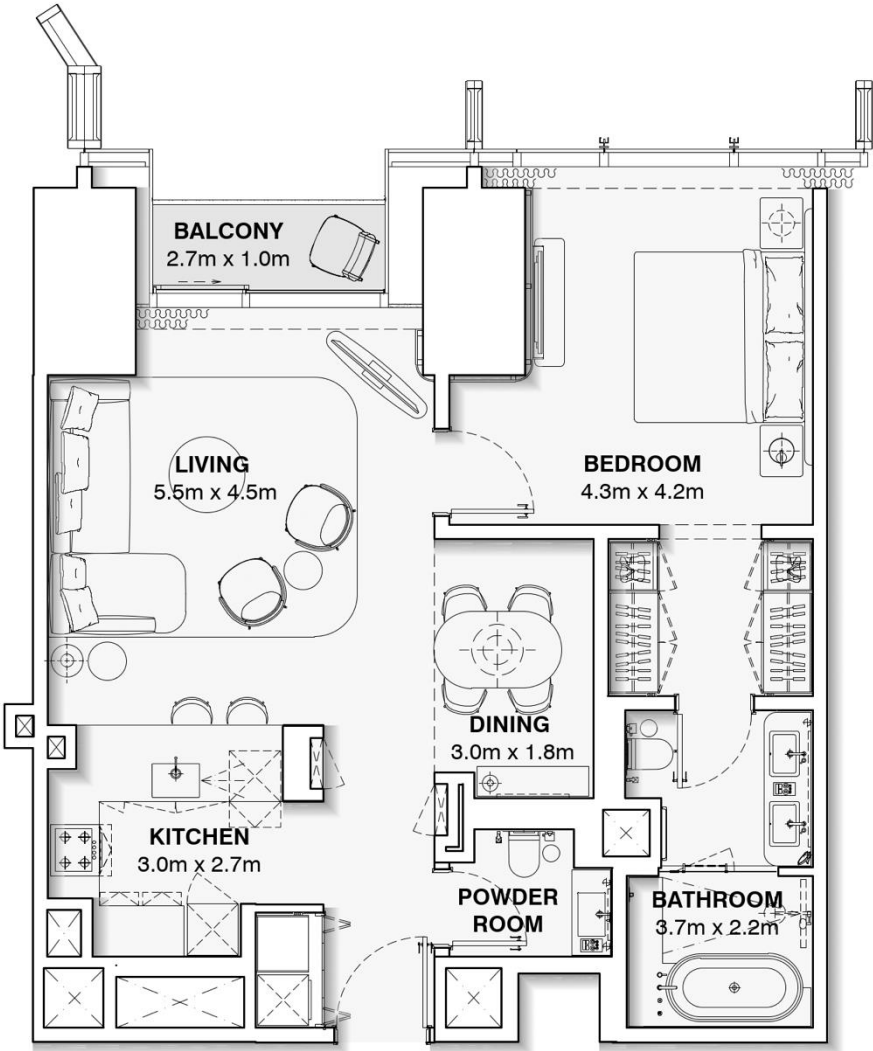
# APARTMENT UNIT : 1406 – 5306

## ONE BEDROOM

APARTMENT AREA : 85.6 m2

BALCONY AREA : 2.9 m2

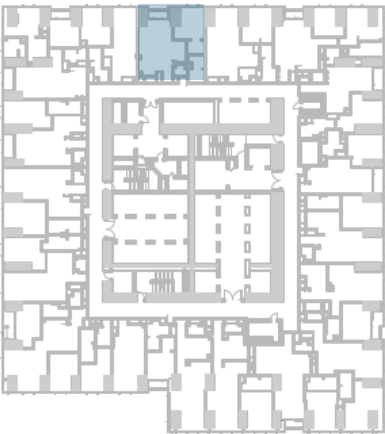
TOTAL AREA : 88.6 m2



**DISCLAIMER:**

The marketing floor plans provided by the developer are for illustrative purposes only. Actual dimensions, layout, and finishes may vary from those depicted in the plans. Furniture shown in the plans are for decorative purposes only and are not included in the purchase of the property.

The developer reserves the right to make modifications, revisions, and changes to the floor plans, specifications and features without prior notice.

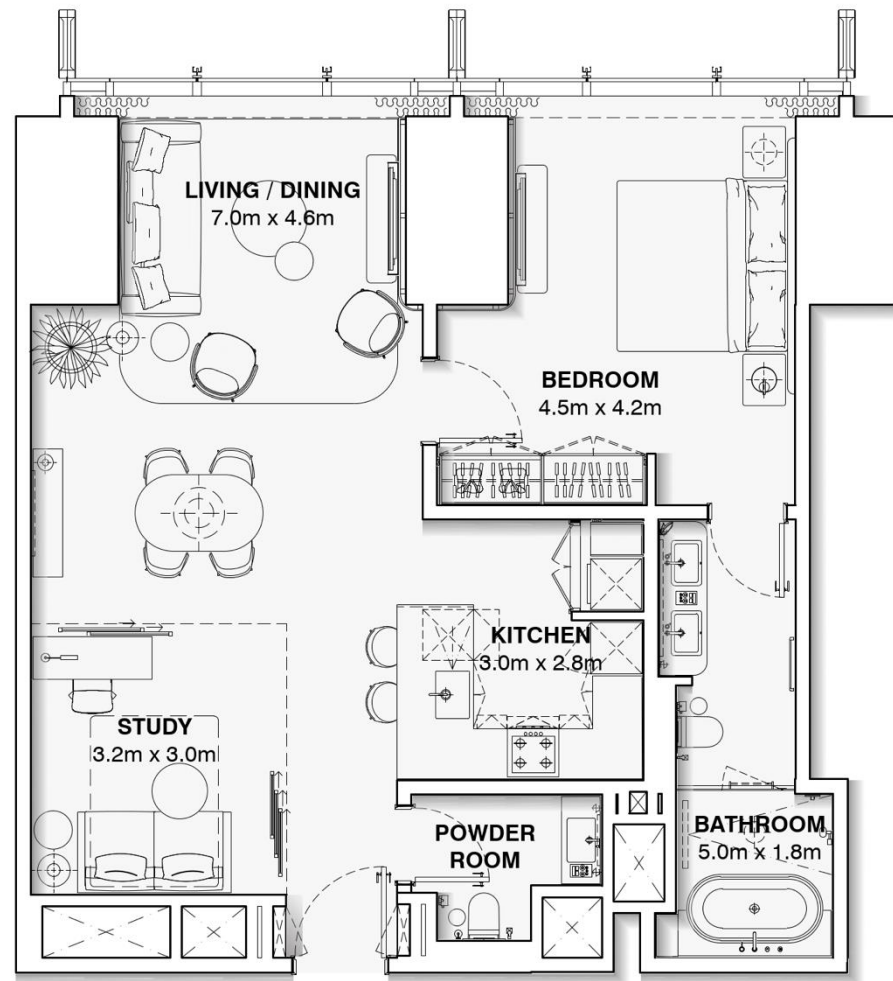


# APARTMENT UNIT : 1407 – 5307

## ONE BEDROOM + STUDY

APARTMENT AREA : 92.0 m<sup>2</sup>

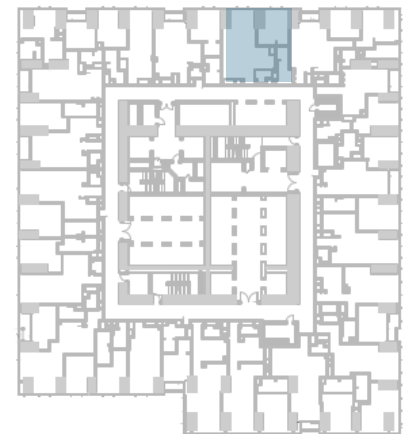
TOTAL AREA : 92.0 m<sup>2</sup>



### DISCLAIMER:

The marketing floor plans provided by the developer are for illustrative purposes only. Actual dimensions, layout, and finishes may vary from those depicted in the plans. Furniture shown in the plans are for decorative purposes only and are not included in the purchase of the property.

The developer reserves the right to make modifications, revisions, and changes to the floor plans, specifications and features without prior notice.



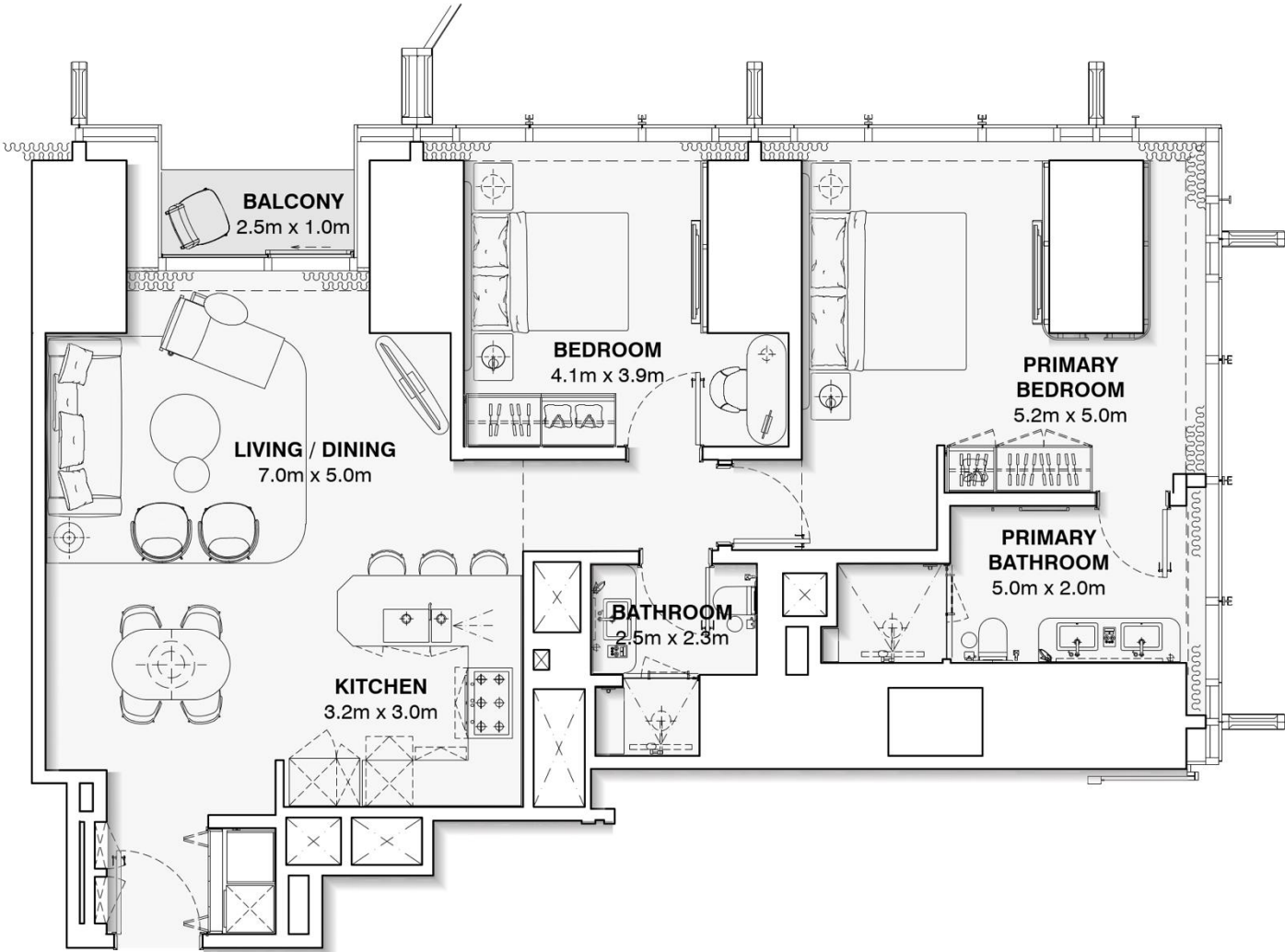
# APARTMENT UNIT : 1408 – 5308

## TWO BEDROOM

APARTMENT AREA : 119.0 m2

BALCONY AREA : 2.7 m2

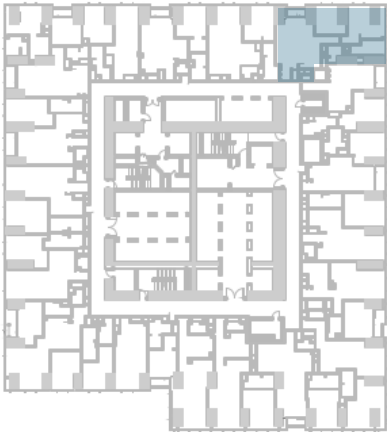
TOTAL AREA : 121.7 m2



**DISCLAIMER:**

The marketing floor plans provided by the developer are for illustrative purposes only. Actual dimensions, layout, and finishes may vary from those depicted in the plans. Furniture shown in the plans are for decorative purposes only and are not included in the purchase of the property.

The developer reserves the right to make modifications, revisions, and changes to the floor plans, specifications and features without prior notice.



# APARTMENT UNIT : 1409 – 5309

## ONE BEDROOM

APARTMENT AREA : 84.8 m2

BALCONY AREA : 4.7m2

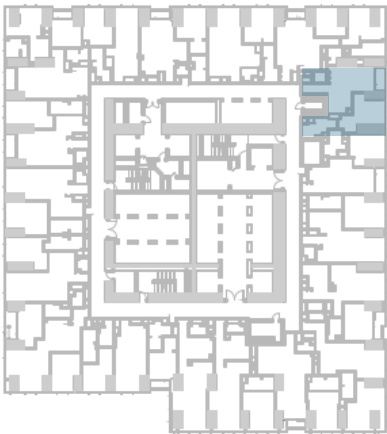
TOTAL AREA : 89.6 m2



**DISCLAIMER:**

The marketing floor plans provided by the developer are for illustrative purposes only. Actual dimensions, layout, and finishes may vary from those depicted in the plans. Furniture shown in the plans are for decorative purposes only and are not included in the purchase of the property.

The developer reserves the right to make modifications, revisions, and changes to the floor plans, specifications and features without prior notice.



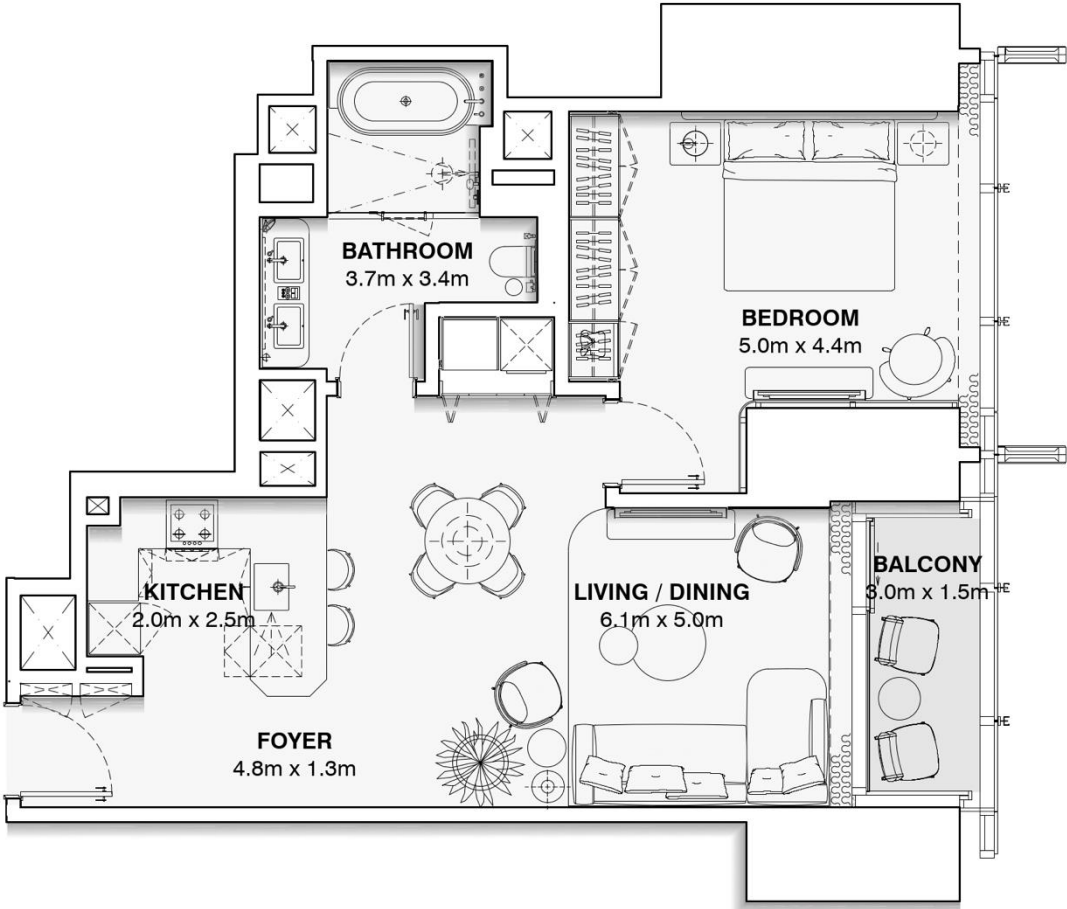
# APARTMENT UNIT : 1410 – 5310

## ONE BEDROOM

APARTMENT AREA : 79.3 m2

BALCONY AREA : 5.0 m2

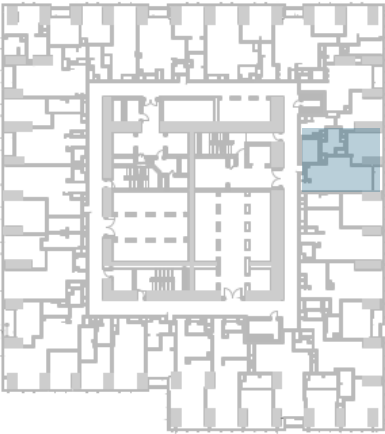
TOTAL AREA : 84.3 m2



**DISCLAIMER:**

The marketing floor plans provided by the developer are for illustrative purposes only. Actual dimensions, layout, and finishes may vary from those depicted in the plans. Furniture shown in the plans are for decorative purposes only and are not included in the purchase of the property.

The developer reserves the right to make modifications, revisions, and changes to the floor plans, specifications and features without prior notice.



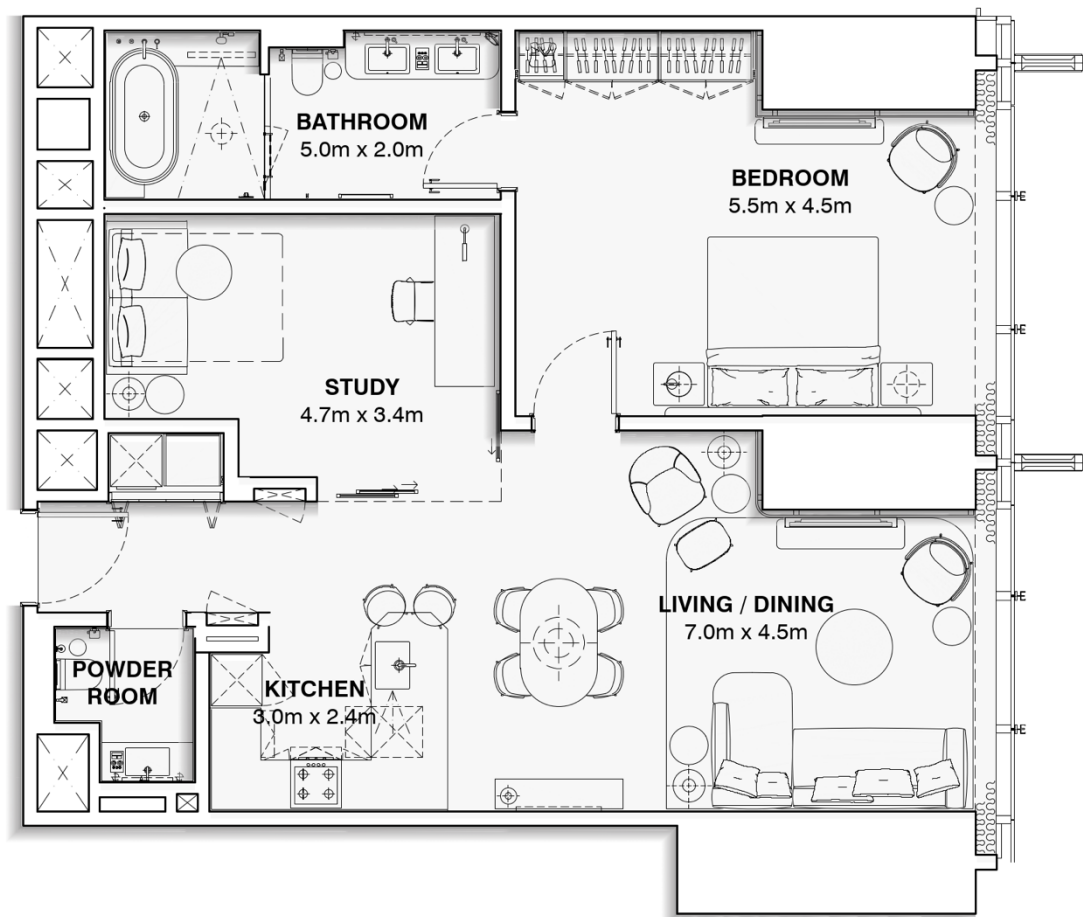


APARTMENT UNIT : 1411 – 5311

ONE BEDROOM + STUDY

APARTMENT AREA : 102.7 m2

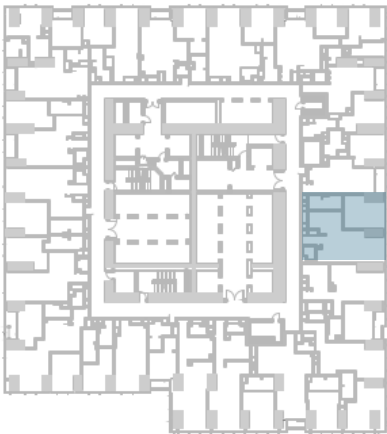
TOTAL AREA : 102.7 m2



DISCLAIMER:

The marketing floor plans provided by the developer are for illustrative purposes only. Actual dimensions, layout, and finishes may vary from those depicted in the plans. Furniture shown in the plans are for decorative purposes only and are not included in the purchase of the property.

The developer reserves the right to make modifications, revisions, and changes to the floor plans, specifications and features without prior notice.



# APARTMENT UNIT : 1412 – 5312

## ONE BEDROOM + STUDY

APARTMENT AREA : 97.7 m2

BALCONY : 5.3 m2

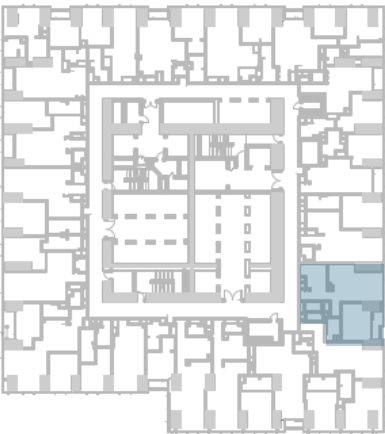
TOTAL AREA : 103.0 m2



**DISCLAIMER:**

The marketing floor plans provided by the developer are for illustrative purposes only. Actual dimensions, layout, and finishes may vary from those depicted in the plans. Furniture shown in the plans are for decorative purposes only and are not included in the purchase of the property.

The developer reserves the right to make modifications, revisions, and changes to the floor plans, specifications and features without prior notice.

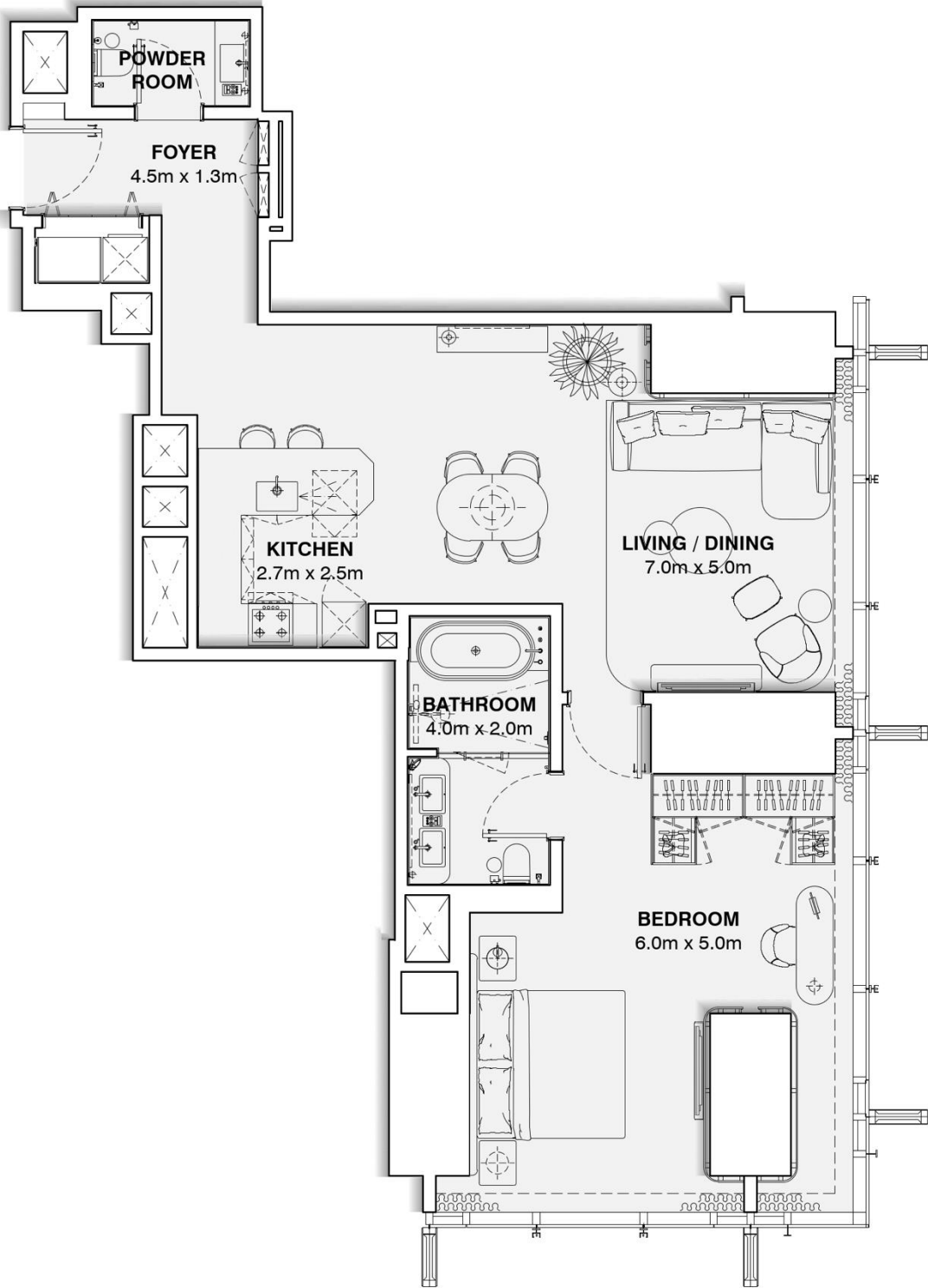


APARTMENT UNIT : 1413 – 5313

ONE BEDROOM

APARTMENT AREA : 99.5 m2

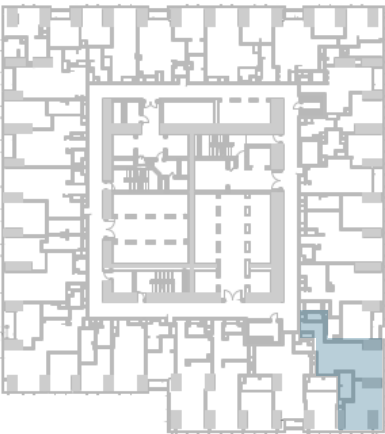
TOTAL AREA : 99.5 m2



DISCLAIMER:

The marketing floor plans provided by the developer are for illustrative purposes only. Actual dimensions, layout, and finishes may vary from those depicted in the plans. Furniture shown in the plans are for decorative purposes only and are not included in the purchase of the property.

The developer reserves the right to make modifications, revisions, and changes to the floor plans, specifications and features without prior notice.



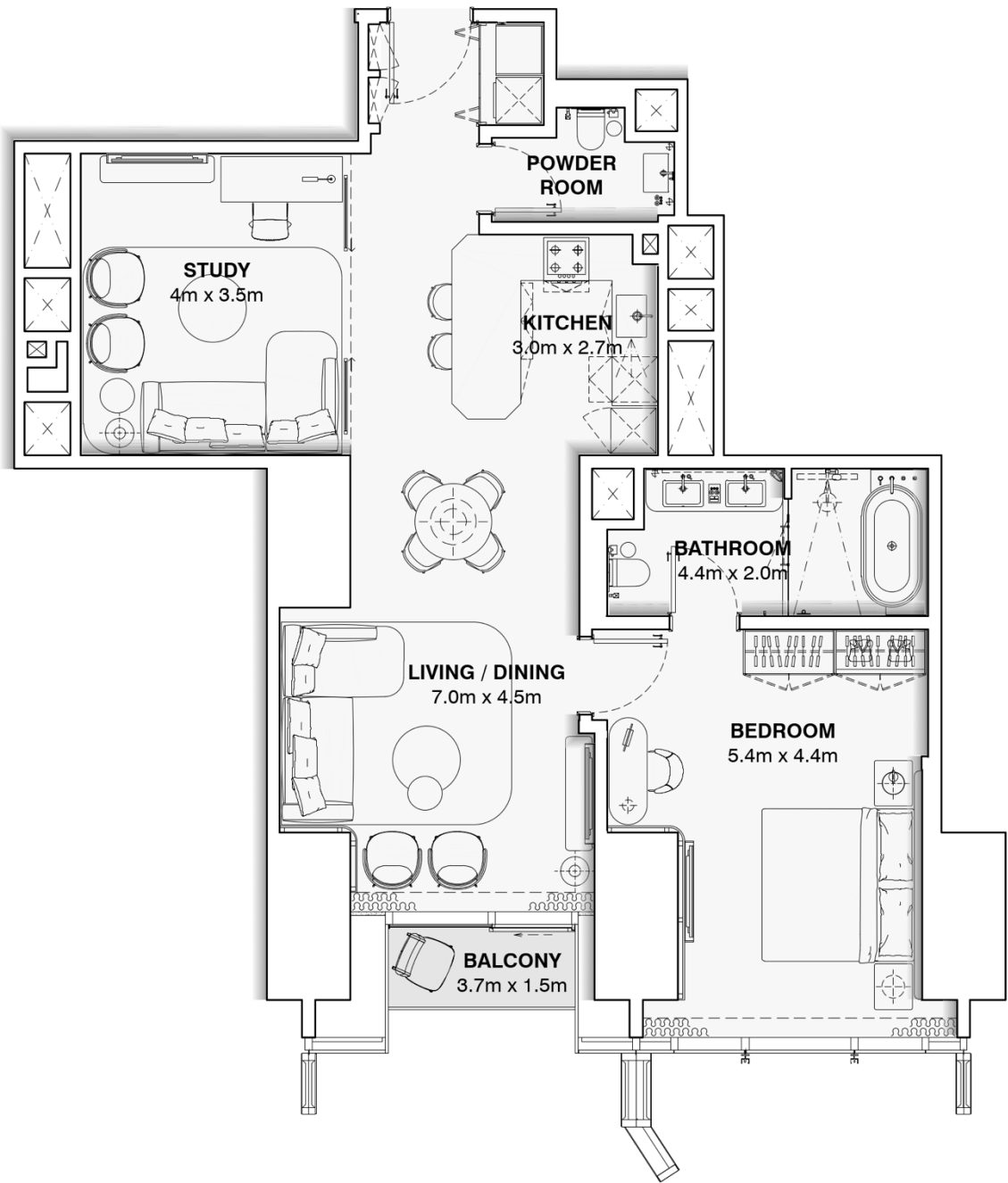
**APARTMENT UNIT : 1414 – 5314**

**ONE BEDROOM + STUDY**

APARTMENT AREA : 98.8 m2

BALCONY AREA : 5.3 m2

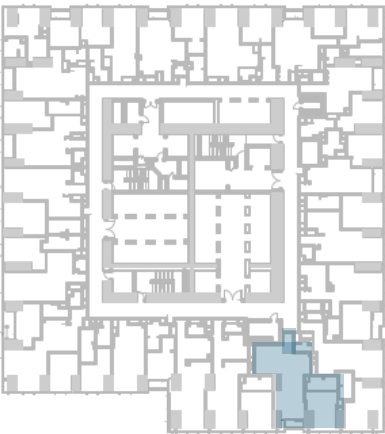
TOTAL AREA : 101.5 m2



**DISCLAIMER:**

The marketing floor plans provided by the developer are for illustrative purposes only. Actual dimensions, layout, and finishes may vary from those depicted in the plans. Furniture shown in the plans are for decorative purposes only and are not included in the purchase of the property.

The developer reserves the right to make modifications, revisions, and changes to the floor plans, specifications and features without prior notice.

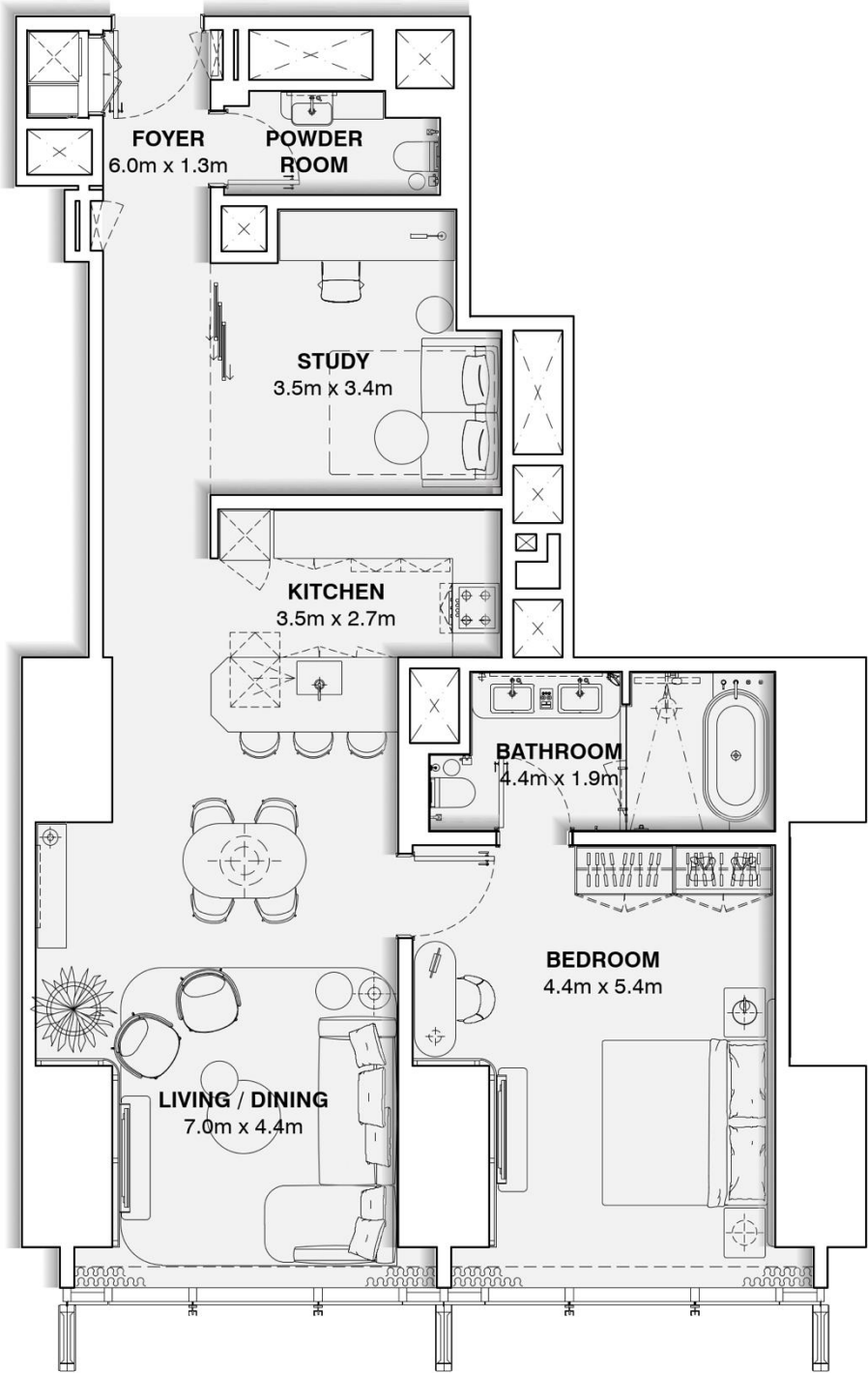


# APARTMENT UNIT : 1415 – 5315

## ONE BEDROOM + STUDY

APARTMENT AREA : 105.7 m2

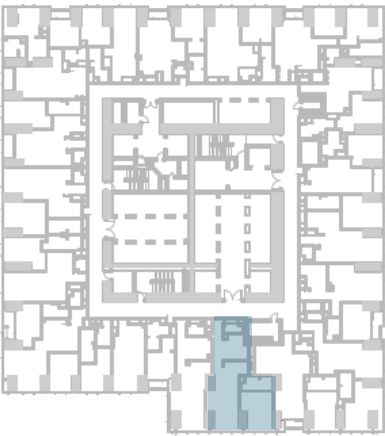
TOTAL AREA : 105.7 m2



**DISCLAIMER:**

The marketing floor plans provided by the developer are for illustrative purposes only. Actual dimensions, layout, and finishes may vary from those depicted in the plans. Furniture shown in the plans are for decorative purposes only and are not included in the purchase of the property.

The developer reserves the right to make modifications, revisions, and changes to the floor plans, specifications and features without prior notice.



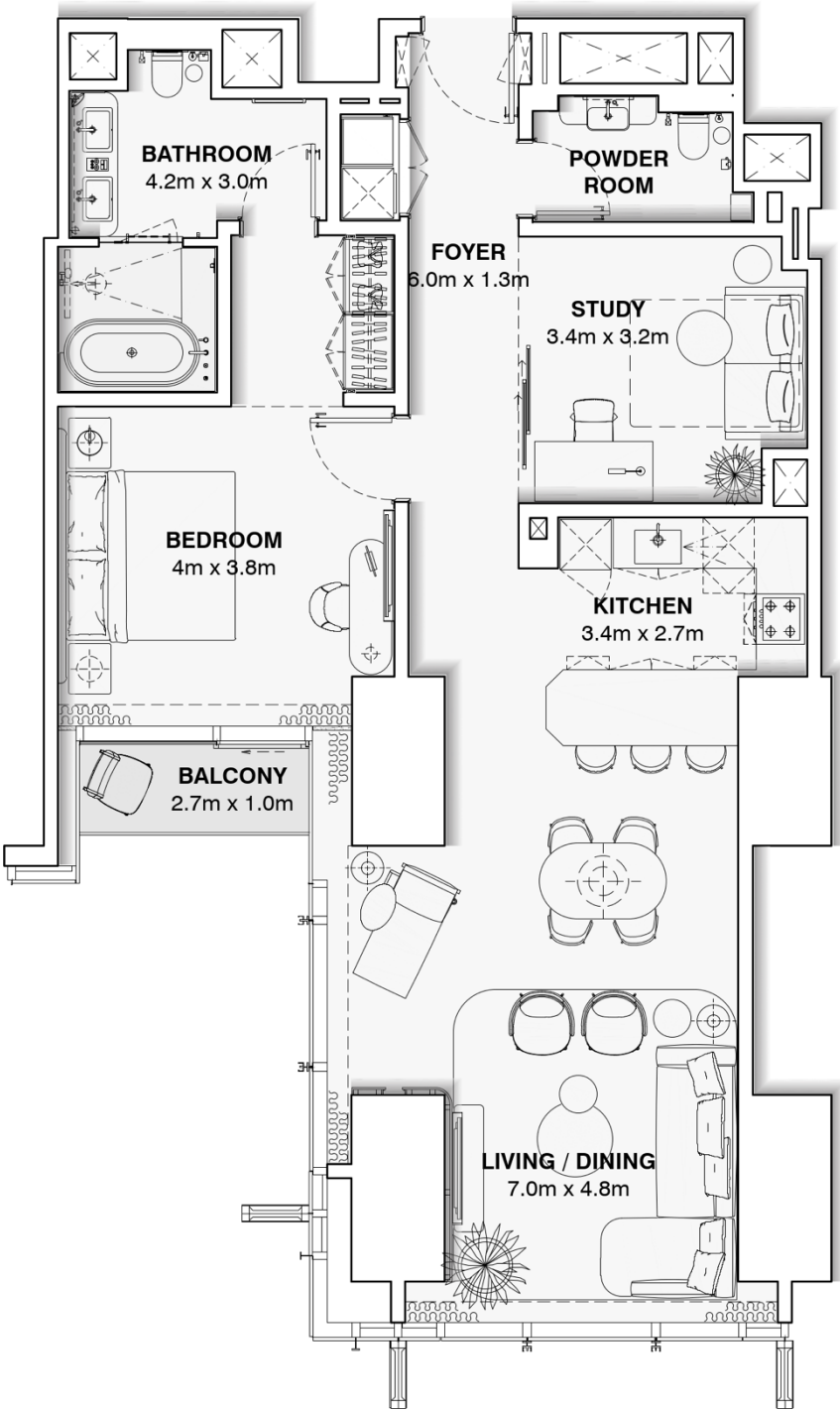
# APARTMENT UNIT : 1416 – 5316

## ONE BEDROOM + STUDY

APARTMENT AREA : 109.4 m2

BALCONY : 3.0 m2

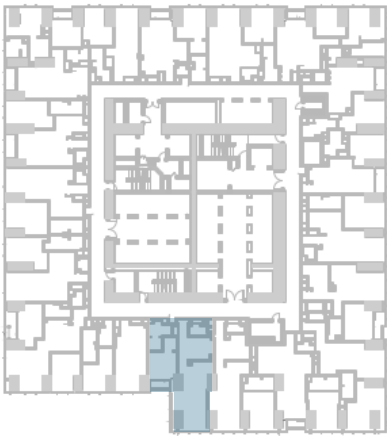
TOTAL AREA : 112.4 m2



**DISCLAIMER:**

The marketing floor plans provided by the developer are for illustrative purposes only. Actual dimensions, layout, and finishes may vary from those depicted in the plans. Furniture shown in the plans are for decorative purposes only and are not included in the purchase of the property.

The developer reserves the right to make modifications, revisions, and changes to the floor plans, specifications and features without prior notice.



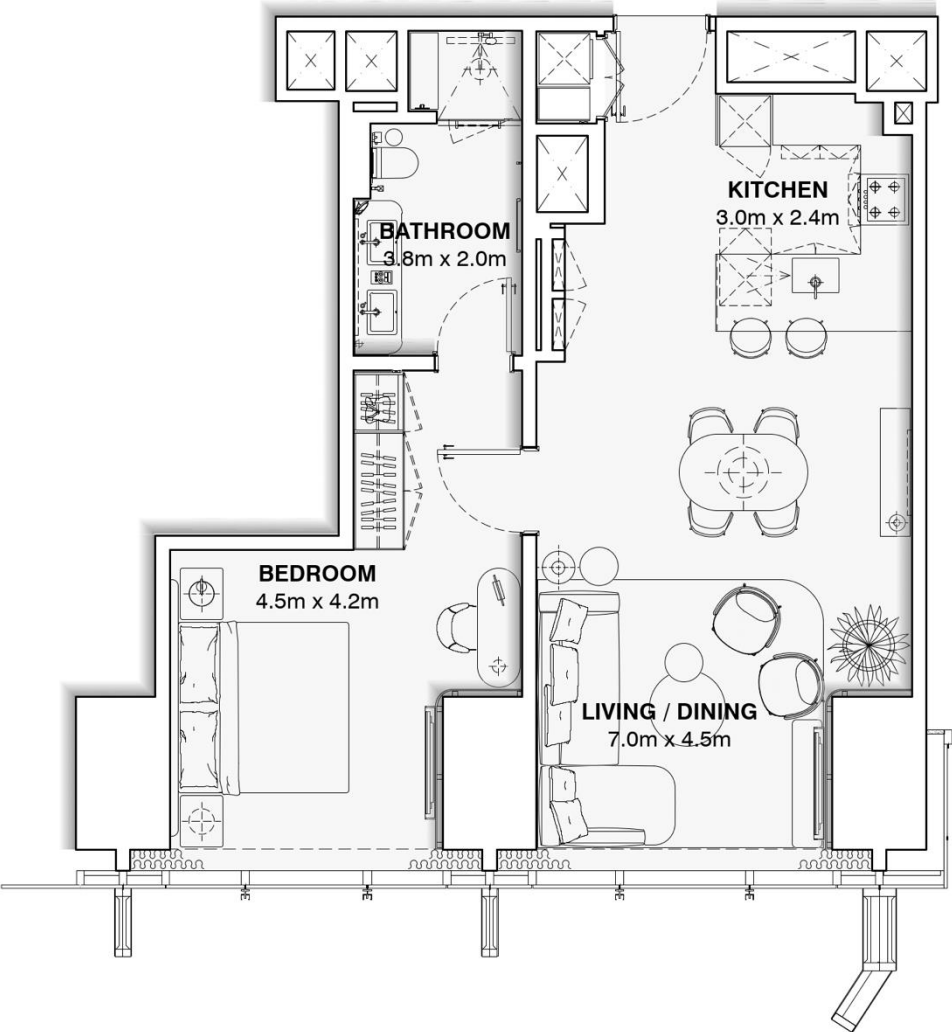


APARTMENT UNIT : 1417 – 5317

ONE BEDROOM

APARTMENT AREA : 73.2 m2

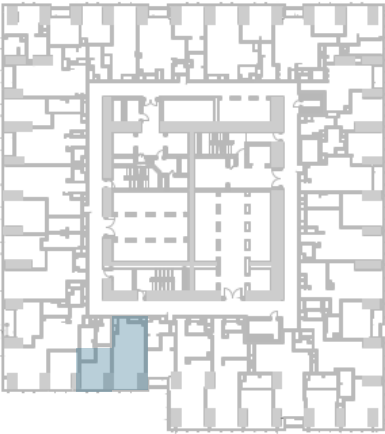
TOTAL AREA : 73.2 m2



DISCLAIMER:

The marketing floor plans provided by the developer are for illustrative purposes only. Actual dimensions, layout, and finishes may vary from those depicted in the plans. Furniture shown in the plans are for decorative purposes only and are not included in the purchase of the property.

The developer reserves the right to make modifications, revisions, and changes to the floor plans, specifications and features without prior notice.



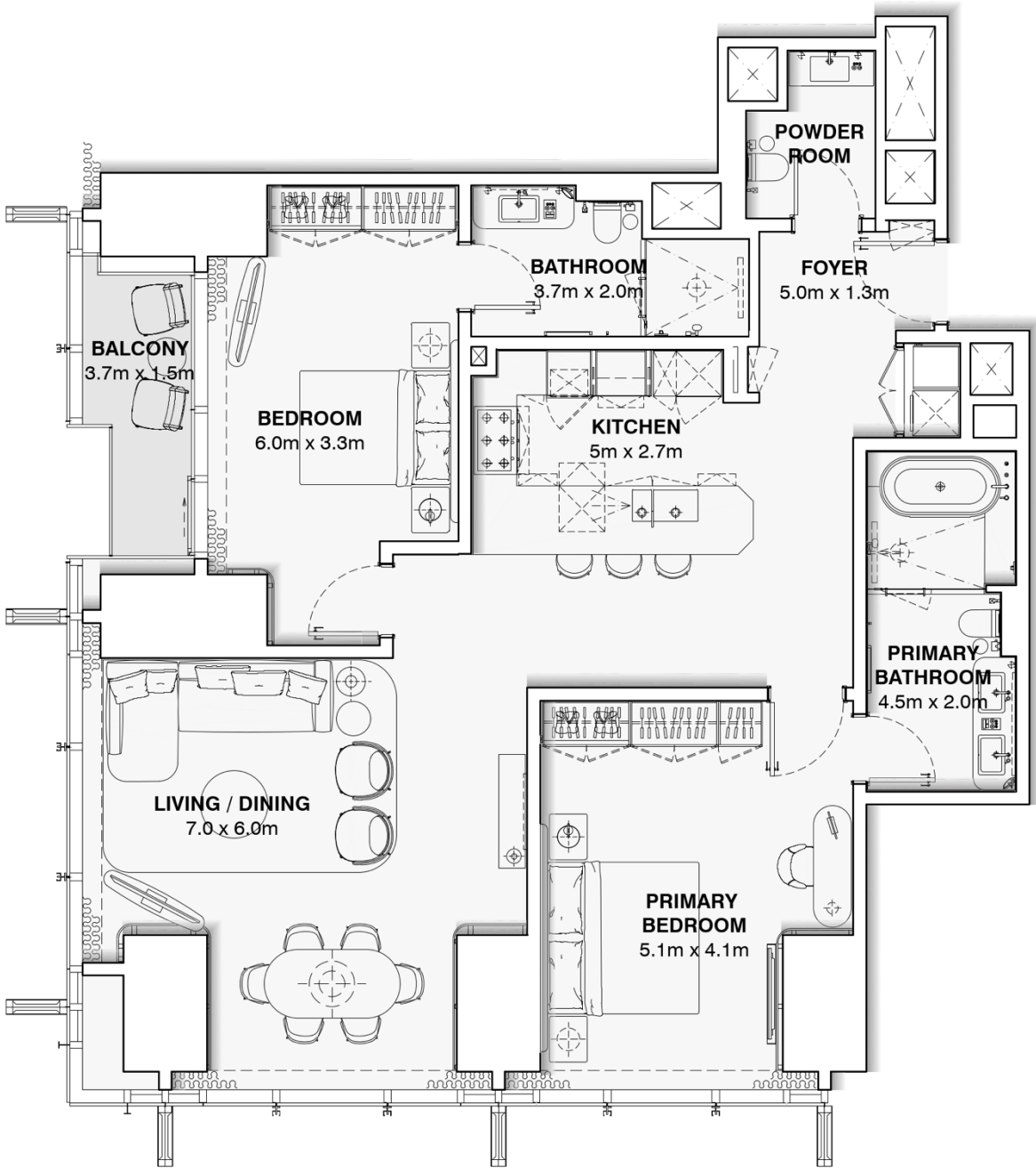
# APARTMENT UNIT : 1418 – 5318

## TWO BEDROOM

APARTMENT AREA : 135.4 m2

BALCONY : 5.3 m2

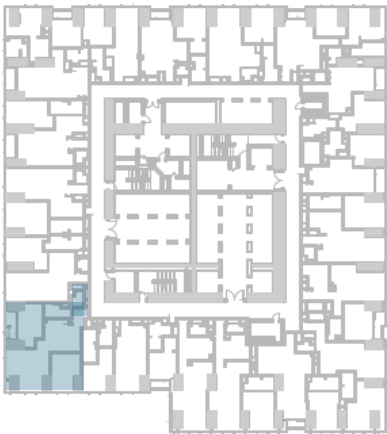
TOTAL AREA : 140.7 m2



**DISCLAIMER:**

The marketing floor plans provided by the developer are for illustrative purposes only. Actual dimensions, layout, and finishes may vary from those depicted in the plans. Furniture shown in the plans are for decorative purposes only and are not included in the purchase of the property.

The developer reserves the right to make modifications, revisions, and changes to the floor plans, specifications and features without prior notice.



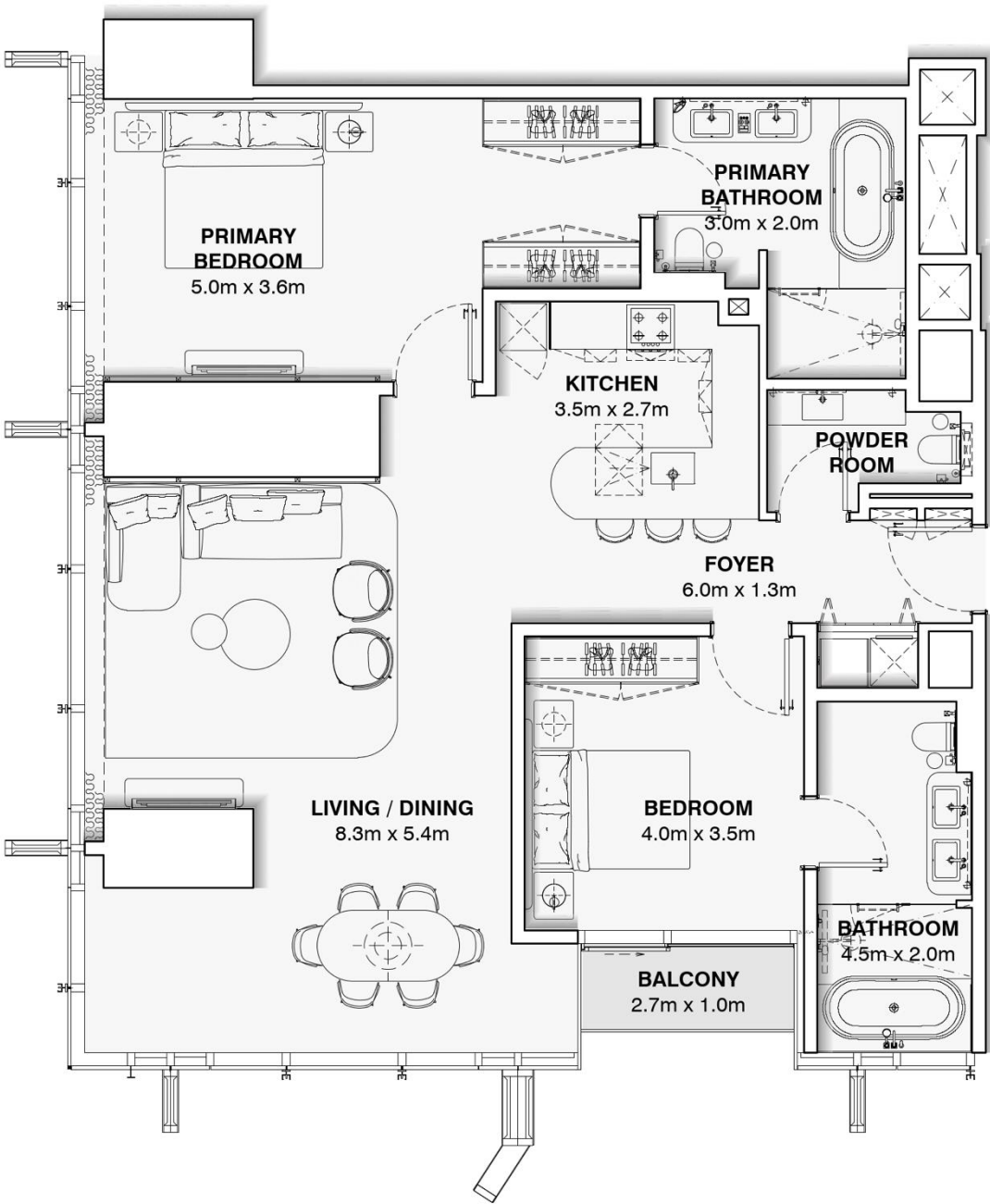
APARTMENT UNIT : 5501 – 6901

TWO BEDROOM

APARTMENT AREA : 134.9 m2

BALCONY AREA : 2.9 m2

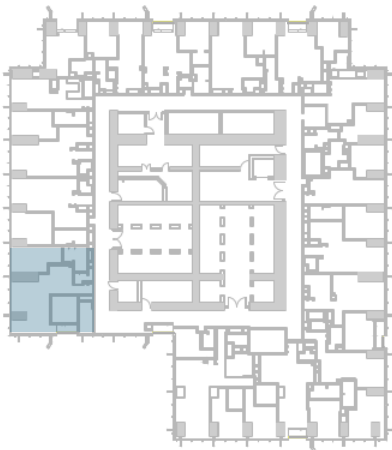
TOTAL AREA : 137.9 m2



**DISCLAIMER:**

The marketing floor plans provided by the developer are for illustrative purposes only. Actual dimensions, layout, and finishes may vary from those depicted in the plans. Furniture shown in the plans are for decorative purposes only and are not included in the purchase of the property.

The developer reserves the right to make modifications, revisions, and changes to the floor plans, specifications and features without prior notice.

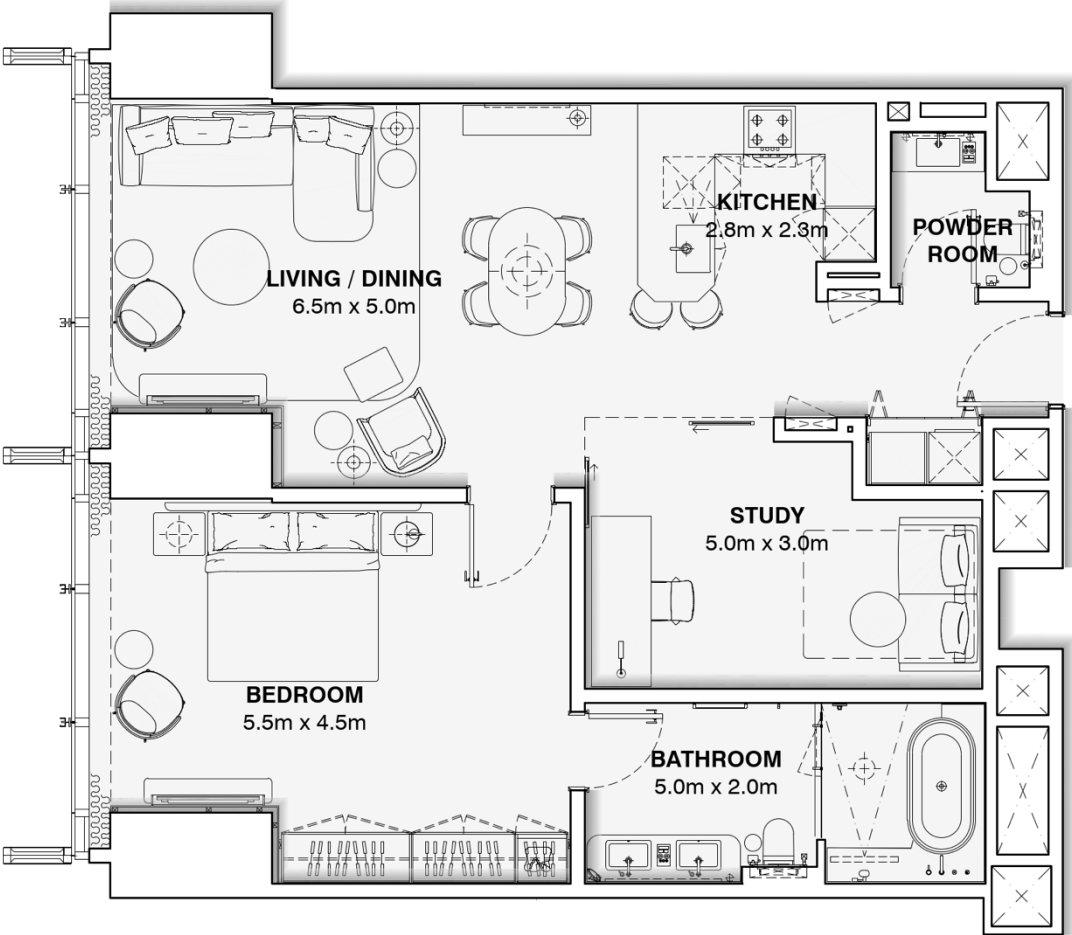


APARTMENT UNIT : 5502 – 6902

ONE BEDROOM + STUDY

APARTMENT AREA : 102.4 m2

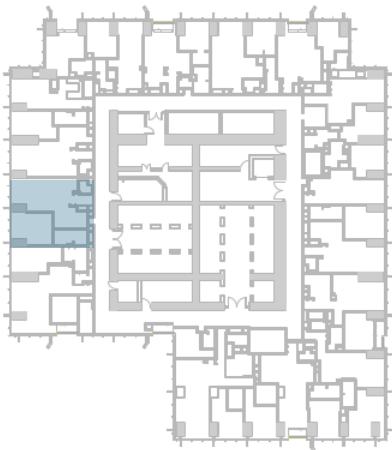
TOTAL AREA : 102.4 m2



DISCLAIMER:

The marketing floor plans provided by the developer are for illustrative purposes only. Actual dimensions, layout, and finishes may vary from those depicted in the plans. Furniture shown in the plans are for decorative purposes only and are not included in the purchase of the property.

The developer reserves the right to make modifications, revisions, and changes to the floor plans, specifications and features without prior notice.

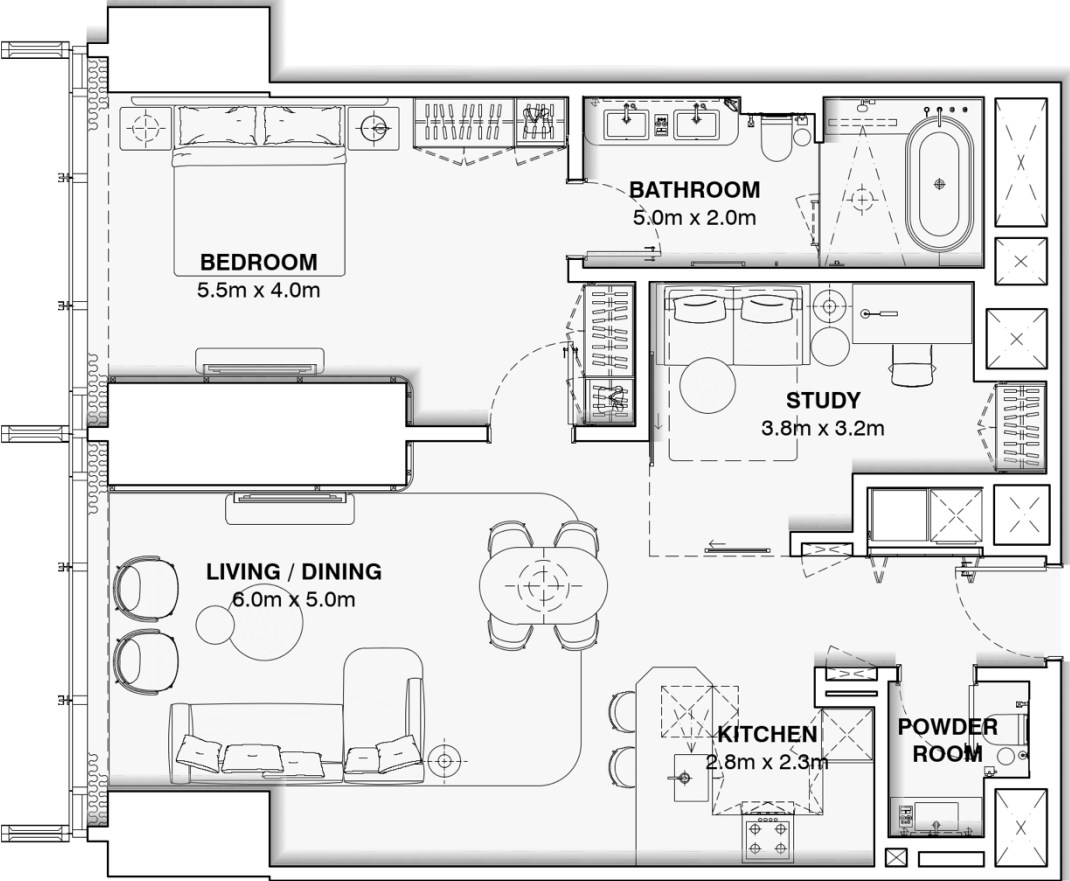


APARTMENT UNIT : 5503 – 6903

ONE BEDROOM + STUDY

APARTMENT AREA : 101.7 m2

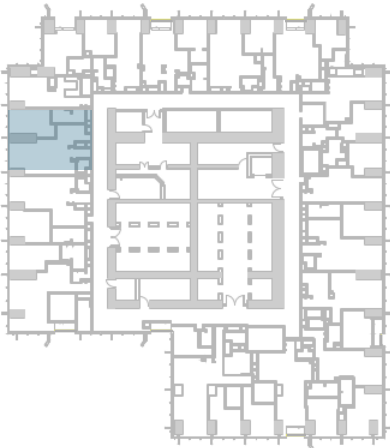
TOTAL AREA : 101.7 m2



**DISCLAIMER:**

The marketing floor plans provided by the developer are for illustrative purposes only. Actual dimensions, layout, and finishes may vary from those depicted in the plans. Furniture shown in the plans are for decorative purposes only and are not included in the purchase of the property.

The developer reserves the right to make modifications, revisions, and changes to the floor plans, specifications and features without prior notice.



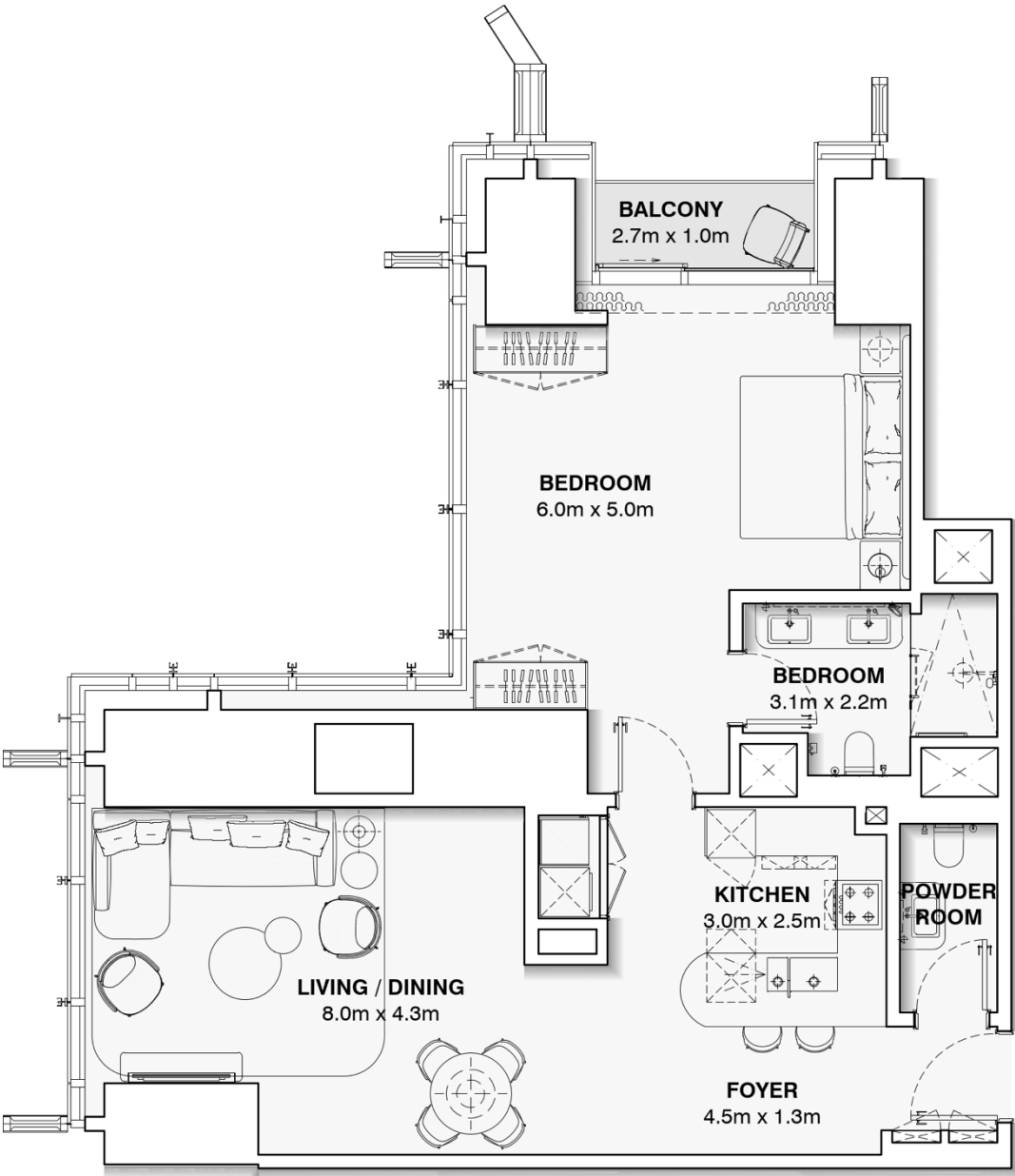
# APARTMENT UNIT : 5504 – 6904

## ONE BEDROOM

APARTMENT AREA : 99.5 m2

BALCONY AREA: 2.9 m2

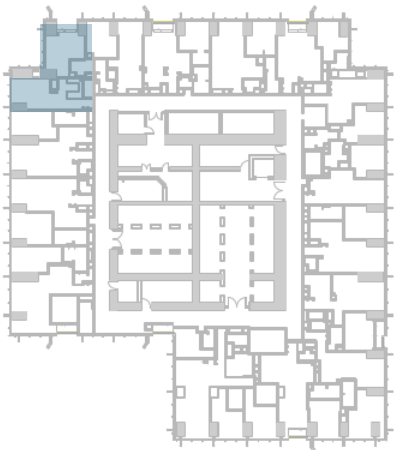
TOTAL AREA : 102.5 m2



### DISCLAIMER:

The marketing floor plans provided by the developer are for illustrative purposes only. Actual dimensions, layout, and finishes may vary from those depicted in the plans. Furniture shown in the plans are for decorative purposes only and are not included in the purchase of the property.

The developer reserves the right to make modifications, revisions, and changes to the floor plans, specifications and features without prior notice.



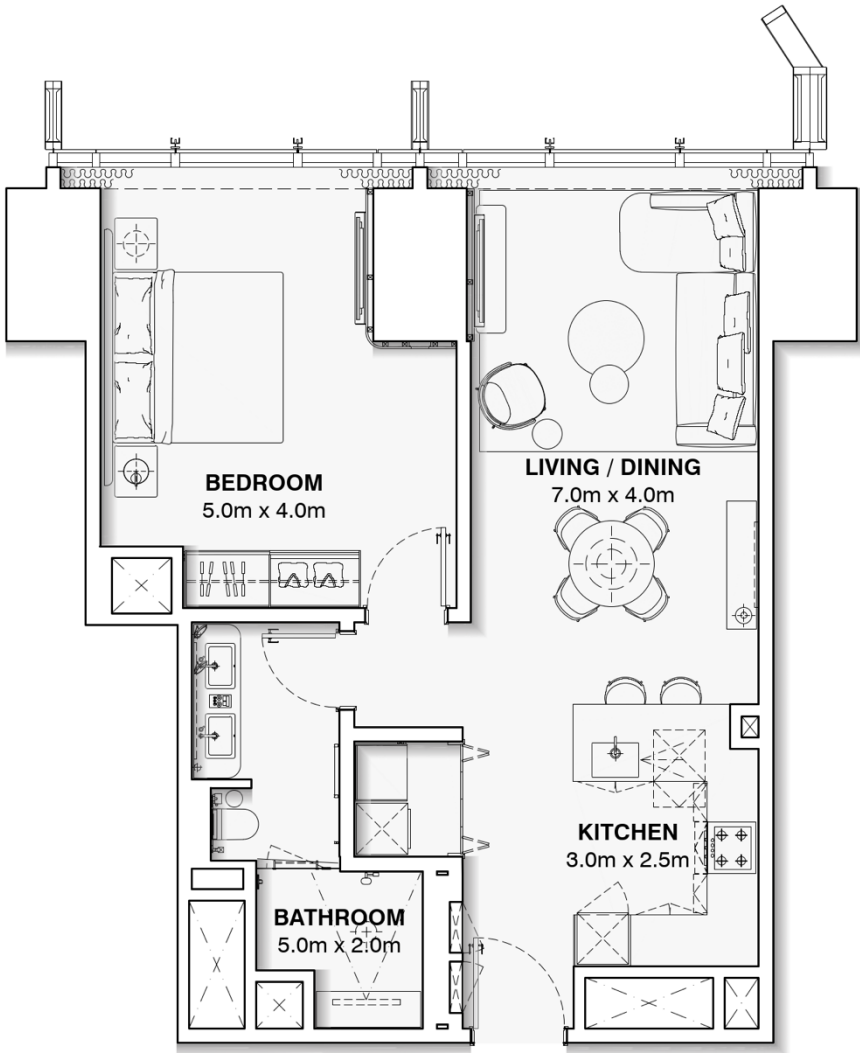


**APARTMENT UNIT : 5505 – 6905**

**ONE BEDROOM**

APARTMENT AREA : 74.4 m2

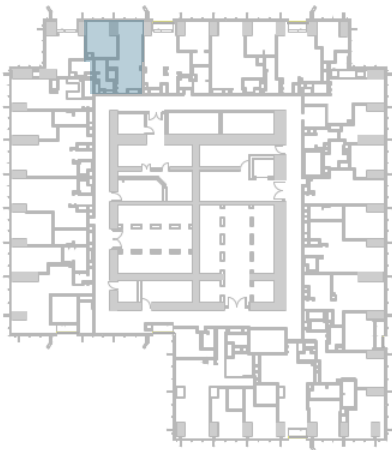
TOTAL AREA : 74.4 m2



**DISCLAIMER:**

The marketing floor plans provided by the developer are for illustrative purposes only. Actual dimensions, layout, and finishes may vary from those depicted in the plans. Furniture shown in the plans are for decorative purposes only and are not included in the purchase of the property.

The developer reserves the right to make modifications, revisions, and changes to the floor plans, specifications and features without prior notice.



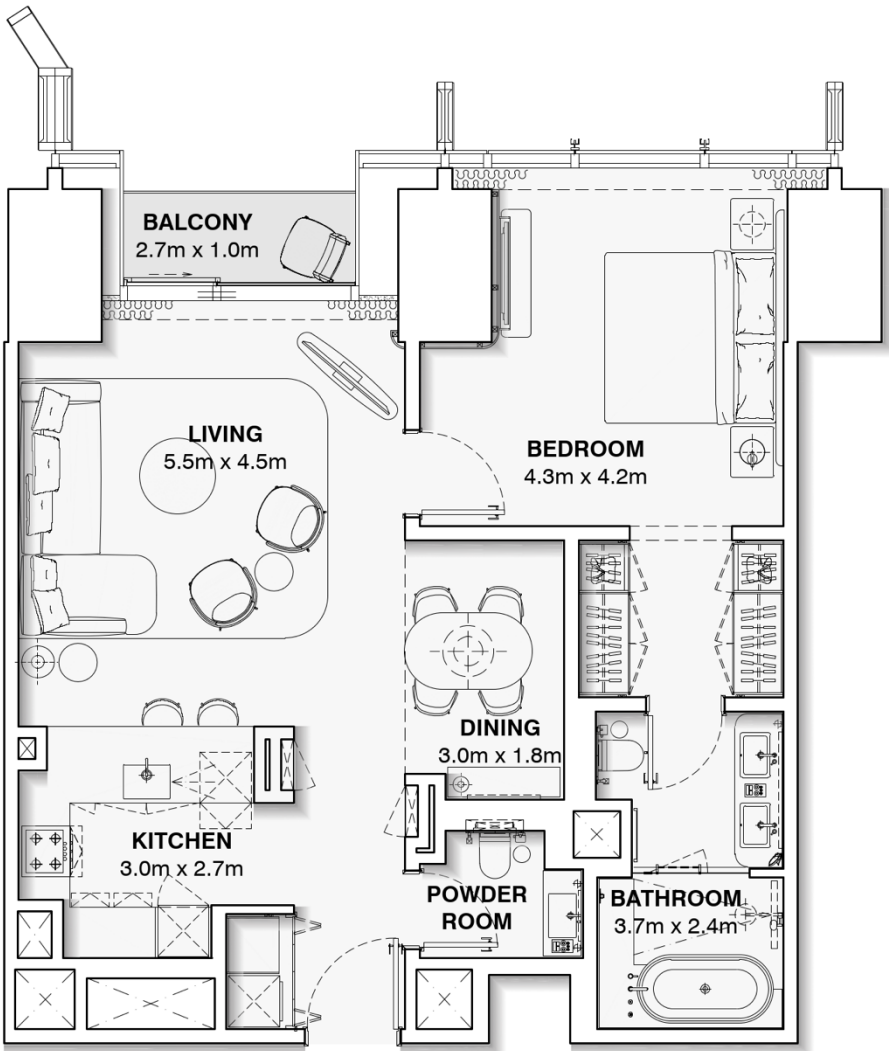
# APARTMENT UNIT : 5506 – 6906

## ONE BEDROOM

APARTMENT AREA : 85.9 m2

BALCONY AREA : 3.0 m2

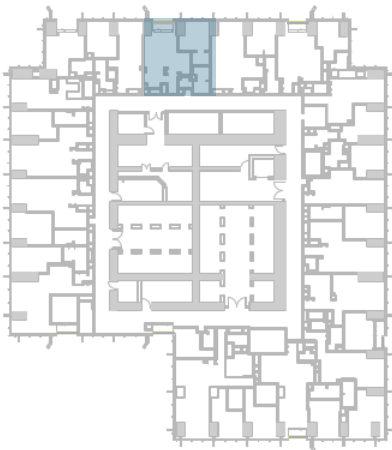
TOTAL AREA : 88.9 m2



**DISCLAIMER:**

The marketing floor plans provided by the developer are for illustrative purposes only. Actual dimensions, layout, and finishes may vary from those depicted in the plans. Furniture shown in the plans are for decorative purposes only and are not included in the purchase of the property.

The developer reserves the right to make modifications, revisions, and changes to the floor plans, specifications and features without prior notice.

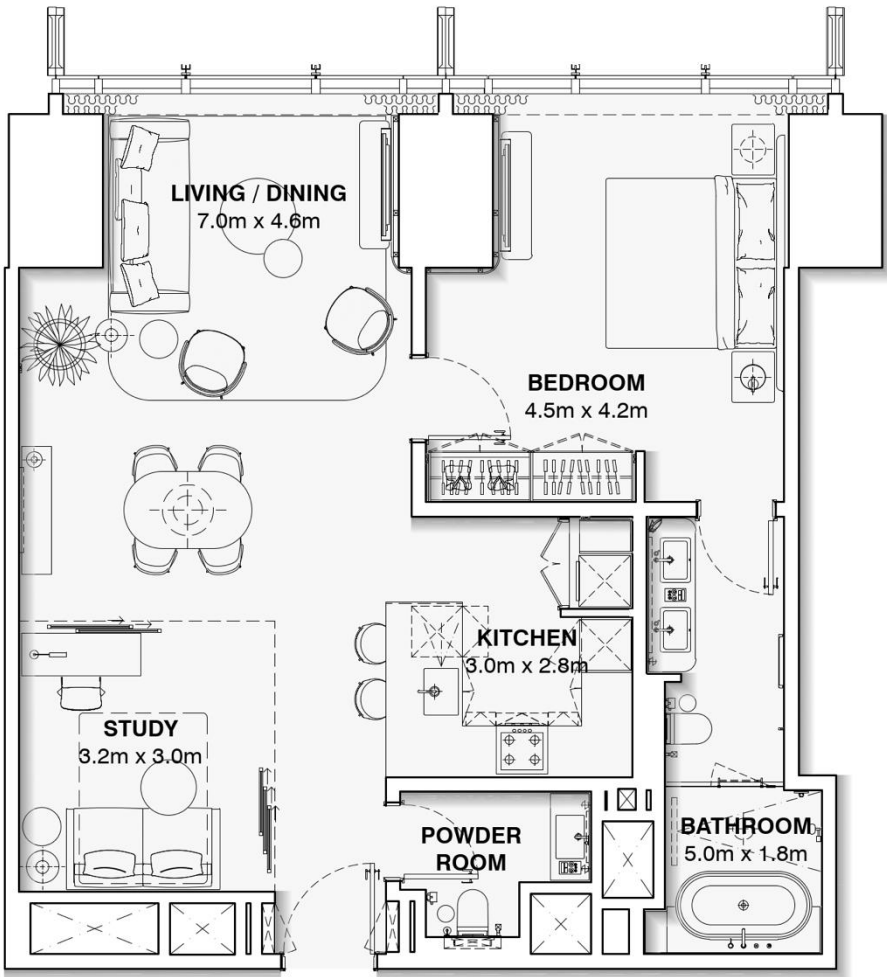


APARTMENT UNIT : 5507 – 6907

ONE BEDROOM

APARTMENT AREA : 92.0 m2

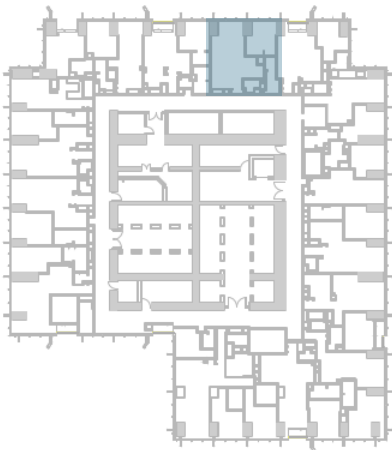
TOTAL AREA : 92.0 m2



**DISCLAIMER:**

The marketing floor plans provided by the developer are for illustrative purposes only. Actual dimensions, layout, and finishes may vary from those depicted in the plans. Furniture shown in the plans are for decorative purposes only and are not included in the purchase of the property.

The developer reserves the right to make modifications, revisions, and changes to the floor plans, specifications and features without prior notice.



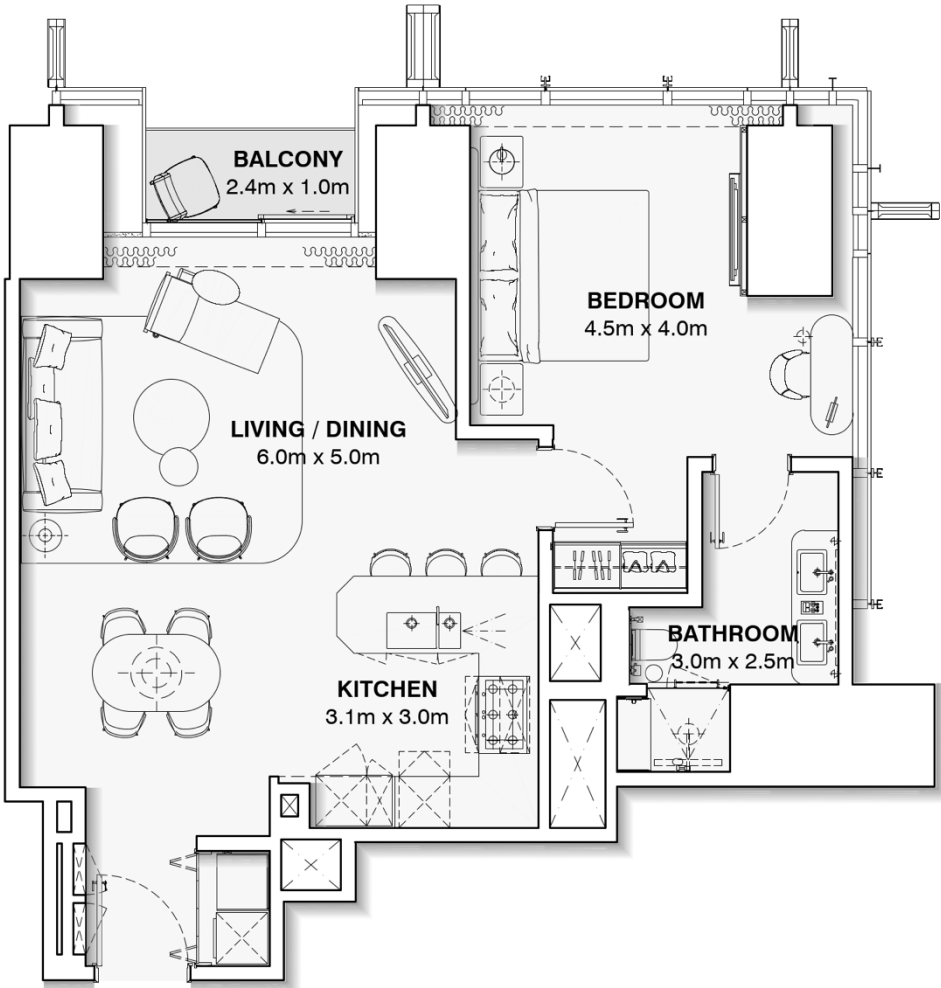
# APARTMENT UNIT : 5508 – 6908

## ONE BEDROOM

APARTMENT AREA : 82.3 m2

BALCONY AREA : 2.7 m2

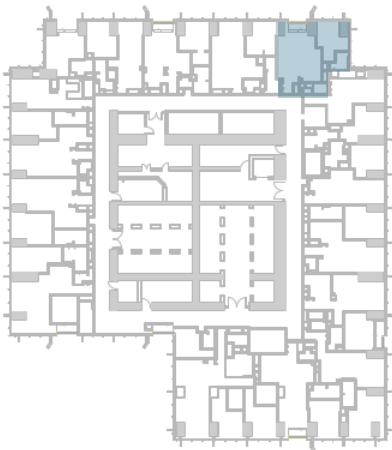
TOTAL AREA : 84.9 m2



**DISCLAIMER:**

The marketing floor plans provided by the developer are for illustrative purposes only. Actual dimensions, layout, and finishes may vary from those depicted in the plans. Furniture shown in the plans are for decorative purposes only and are not included in the purchase of the property.

The developer reserves the right to make modifications, revisions, and changes to the floor plans, specifications and features without prior notice.

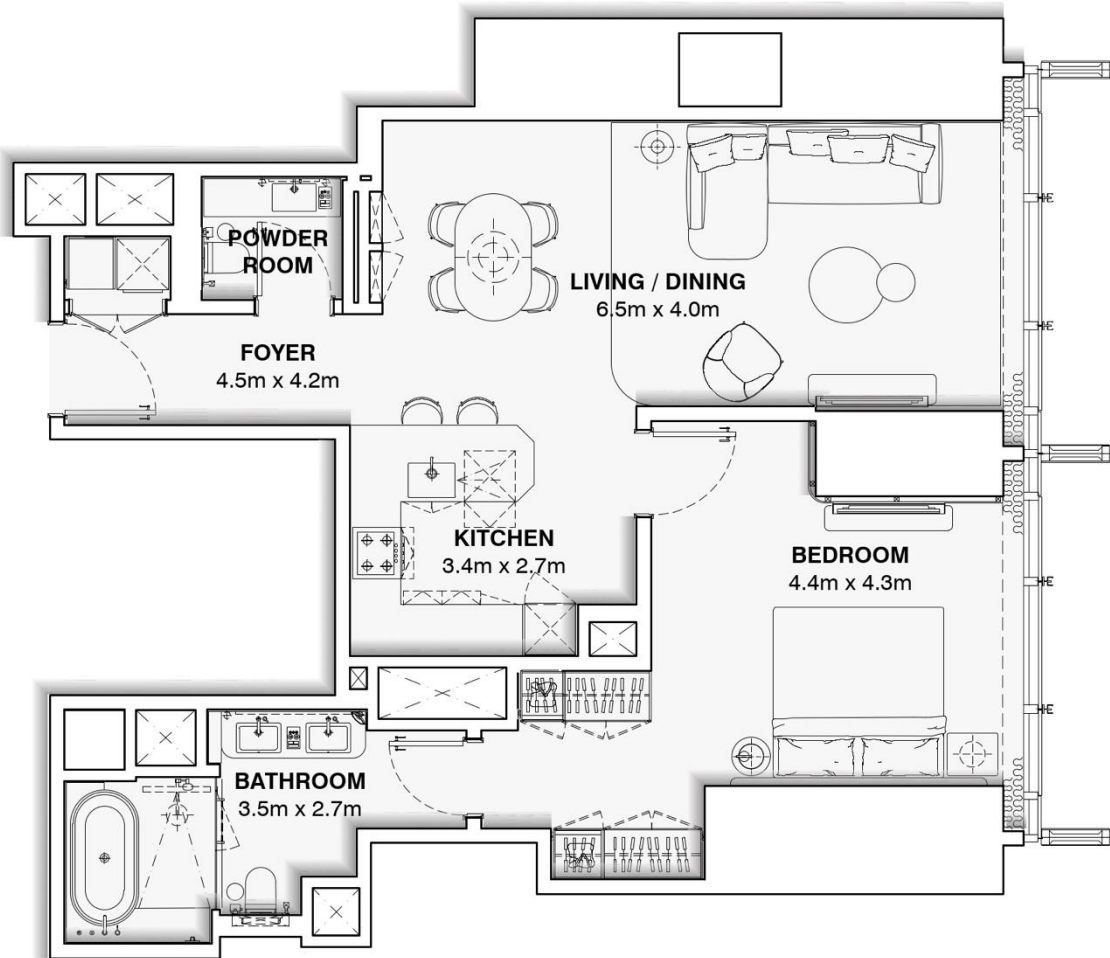


# APARTMENT UNIT : 5509 – 6909

## ONE BEDROOM

APARTMENT AREA : 94.7 m2

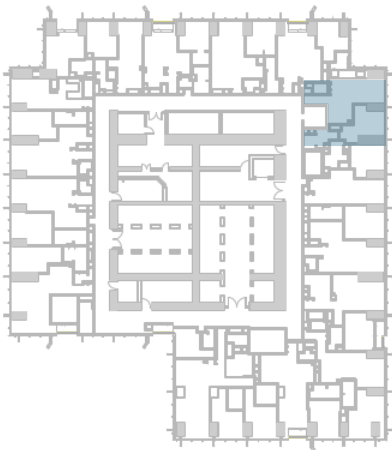
TOTAL AREA : 94.7 m2



**DISCLAIMER:**

The marketing floor plans provided by the developer are for illustrative purposes only. Actual dimensions, layout, and finishes may vary from those depicted in the plans. Furniture shown in the plans are for decorative purposes only and are not included in the purchase of the property.

The developer reserves the right to make modifications, revisions, and changes to the floor plans, specifications and features without prior notice.



# APARTMENT UNIT : 5510 – 6910

## ONE BEDROOM

APARTMENT AREA : 84.3 m2

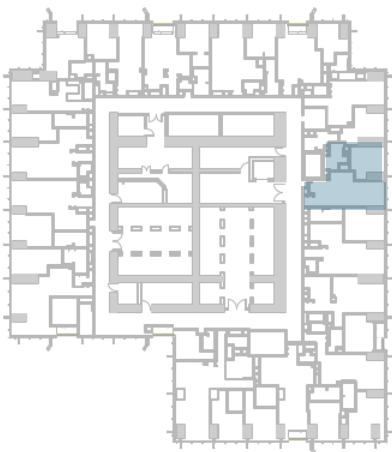
TOTAL AREA : 84.3 m2



**DISCLAIMER:**

The marketing floor plans provided by the developer are for illustrative purposes only. Actual dimensions, layout, and finishes may vary from those depicted in the plans. Furniture shown in the plans are for decorative purposes only and are not included in the purchase of the property.

The developer reserves the right to make modifications, revisions, and changes to the floor plans, specifications and features without prior notice.



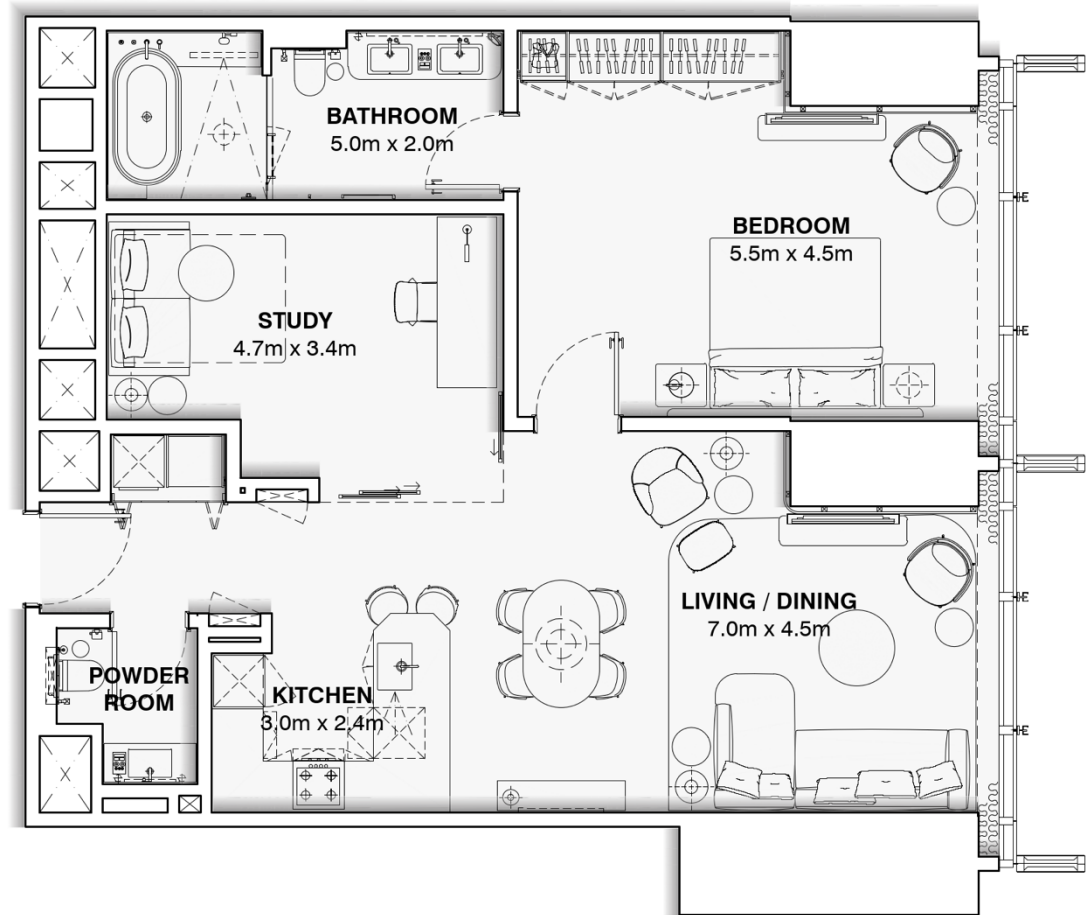


APARTMENT UNIT : 5511 – 6911

ONE BEDROOM + STUDY

APARTMENT AREA : 102.8 m2

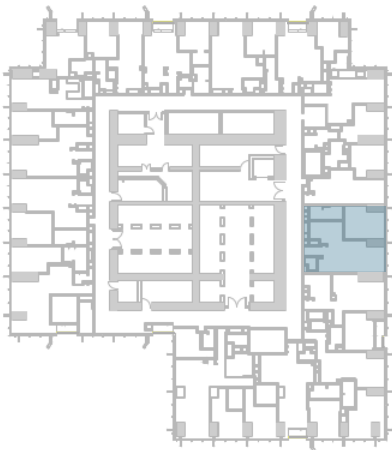
TOTAL AREA : 102.8 m2



**DISCLAIMER:**

The marketing floor plans provided by the developer are for illustrative purposes only. Actual dimensions, layout, and finishes may vary from those depicted in the plans. Furniture shown in the plans are for decorative purposes only and are not included in the purchase of the property.

The developer reserves the right to make modifications, revisions, and changes to the floor plans, specifications and features without prior notice.



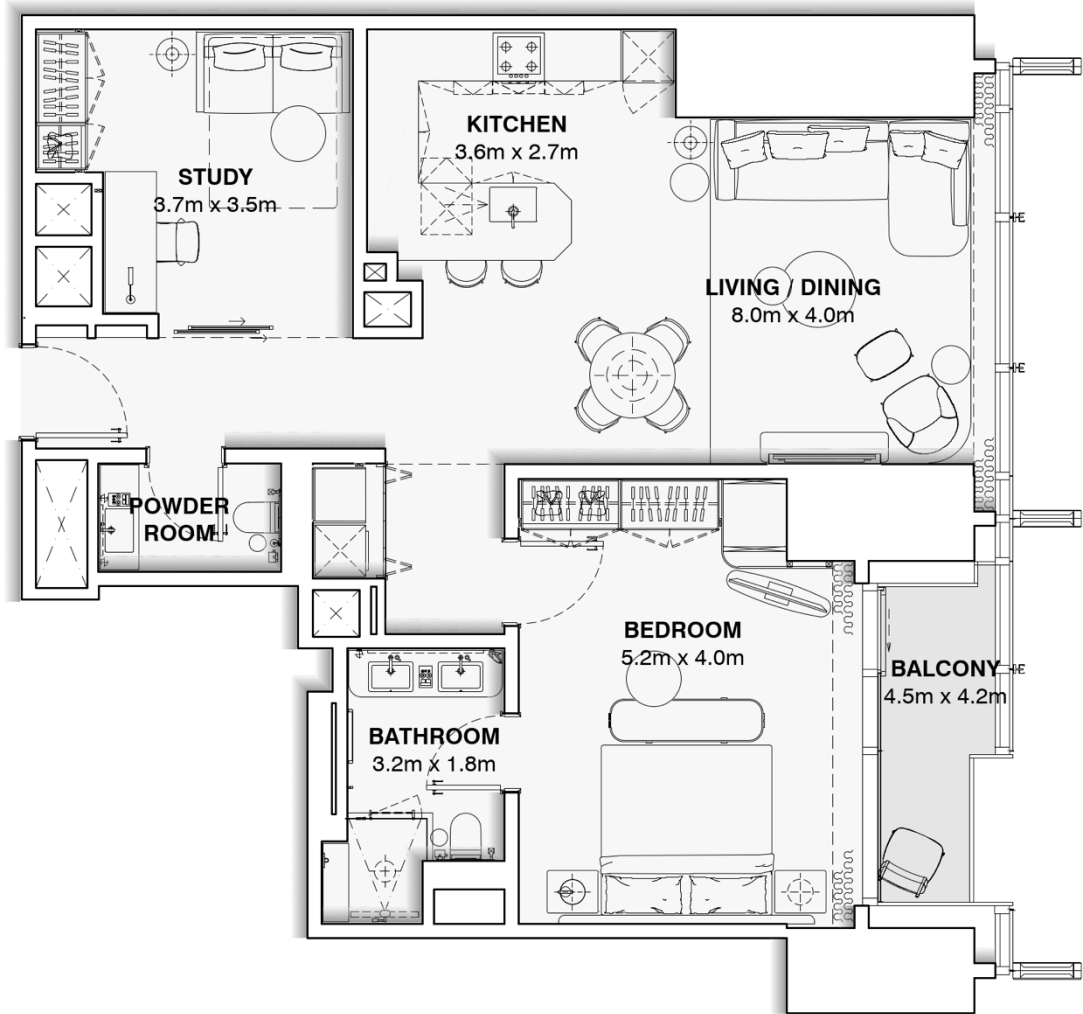
APARTMENT UNIT : 5512 – 6912

ONE BEDROOM + STUDY

APARTMENT AREA : 98.3 m2

BALCONY AREA : 2.9 m2

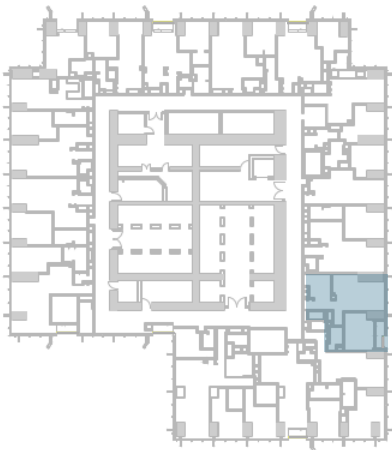
TOTAL AREA : 103.2 m2



**DISCLAIMER:**

The marketing floor plans provided by the developer are for illustrative purposes only. Actual dimensions, layout, and finishes may vary from those depicted in the plans. Furniture shown in the plans are for decorative purposes only and are not included in the purchase of the property.

The developer reserves the right to make modifications, revisions, and changes to the floor plans, specifications and features without prior notice.

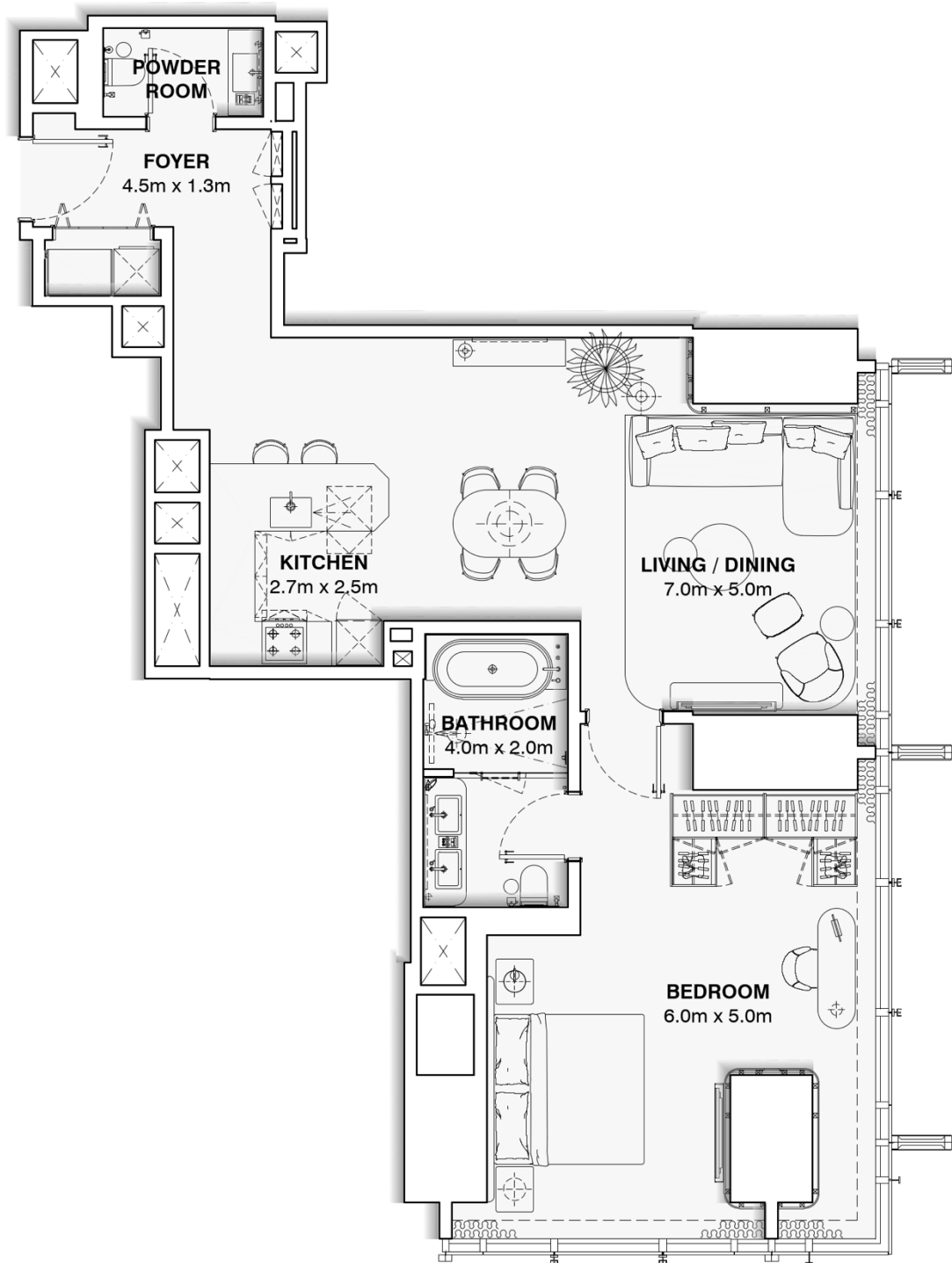


APARTMENT UNIT : 5513 – 6913

ONE BEDROOM

APARTMENT AREA : 99.3 m2

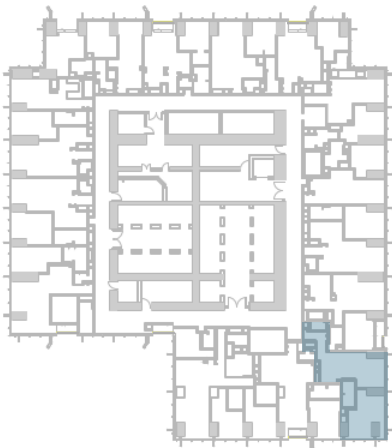
TOTAL AREA : 99.3 m2



DISCLAIMER:

The marketing floor plans provided by the developer are for illustrative purposes only. Actual dimensions, layout, and finishes may vary from those depicted in the plans. Furniture shown in the plans are for decorative purposes only and are not included in the purchase of the property.

The developer reserves the right to make modifications, revisions, and changes to the floor plans, specifications and features without prior notice.



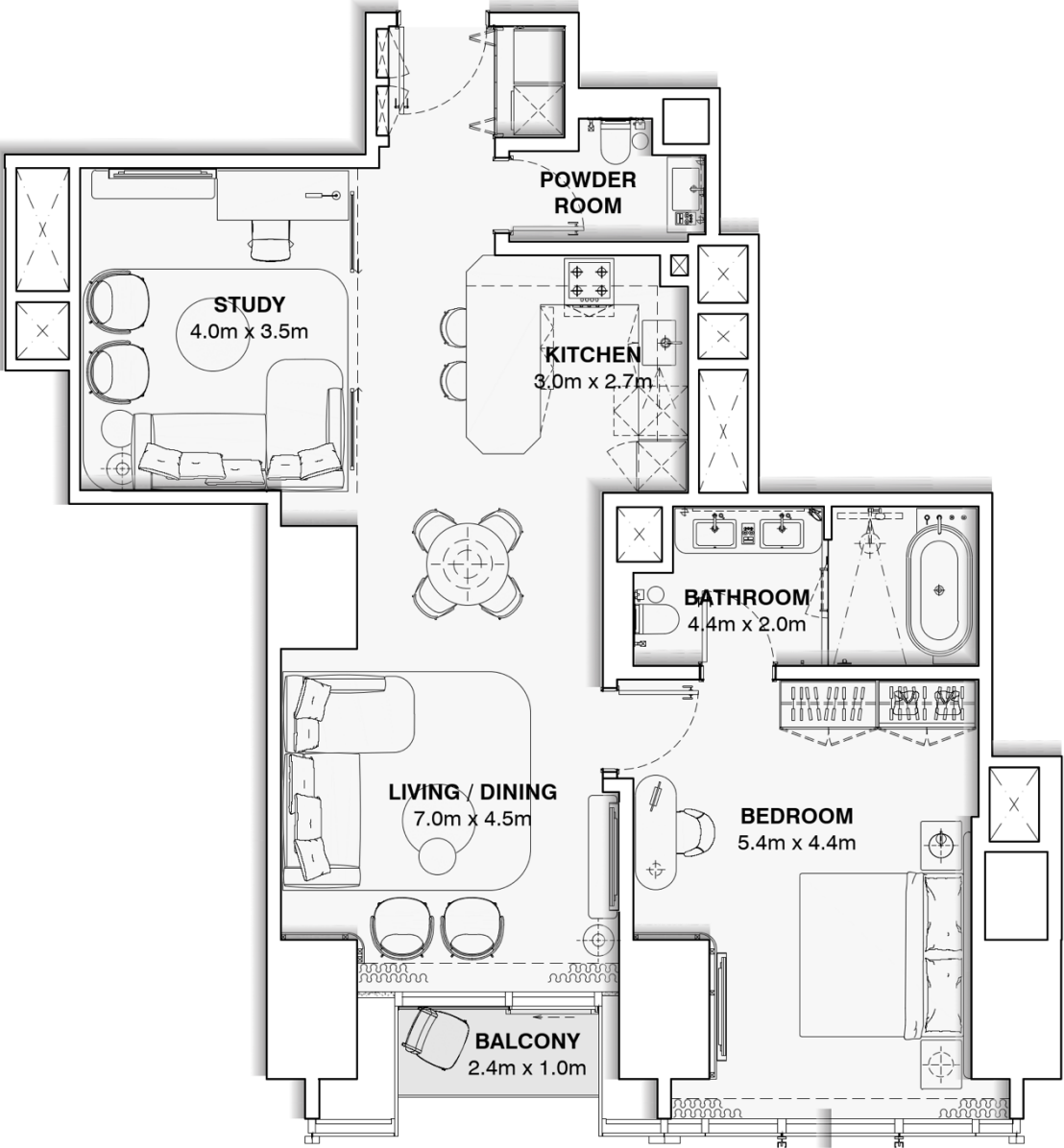
**APARTMENT UNIT : 5514 – 6914**

**ONE BEDROOM + STUDY**

APARTMENT AREA : 98.9 m2

BALCONY AREA : 2.7 m2

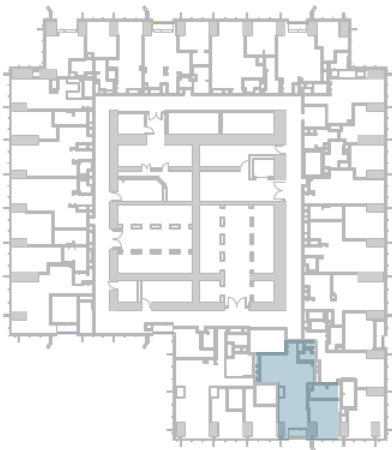
**TOTAL AREA : 101.6 m2**



**DISCLAIMER:**

The marketing floor plans provided by the developer are for illustrative purposes only. Actual dimensions, layout, and finishes may vary from those depicted in the plans. Furniture shown in the plans are for decorative purposes only and are not included in the purchase of the property.

The developer reserves the right to make modifications, revisions, and changes to the floor plans, specifications and features without prior notice.



# APARTMENT UNIT : 5515 – 6915

## THREE BEDROOM + STUDY

APARTMENT AREA : 189.0 m2

TOTAL AREA : 189.0 m2



**DISCLAIMER:**

The marketing floor plans provided by the developer are for illustrative purposes only. Actual dimensions, layout, and finishes may vary from those depicted in the plans. Furniture shown in the plans are for decorative purposes only and are not included in the purchase of the property.

The developer reserves the right to make modifications, revisions, and changes to the floor plans, specifications and features without prior notice.

